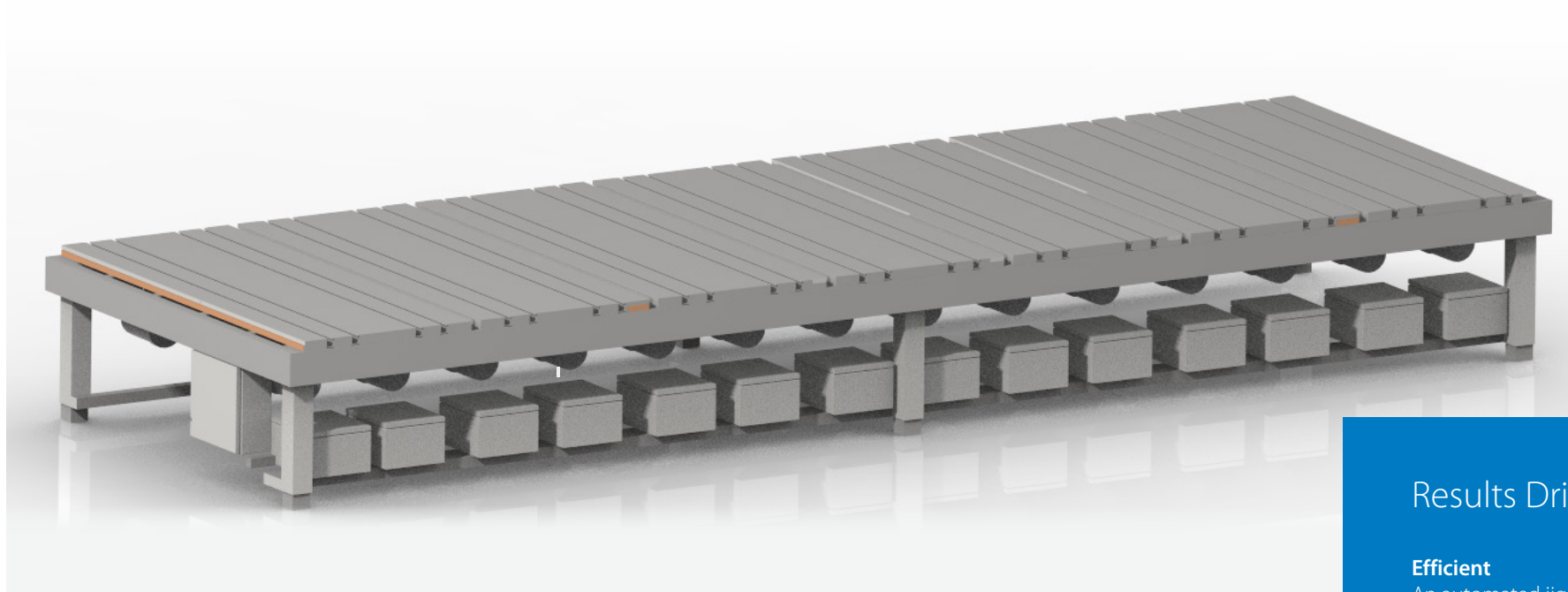


Alpine® Small Component Table with SpeedSet Automation



Optimize your small component production.



Automated production for small trusses and hip roof components.

The Alpine Small Component Table (SCT) with SpeedSet Automation is the latest production efficiency improvement for offsite builders. The SCT features automated jigging, pneumatic lift outs, and can utilize Alpine's SmartView software to improve worker productivity.

SmartView is an optional, interactive, overhead viewing system that can speed up truss production table assembly by providing on-demand dimensions for build verification, zoom functionality, and member and plate information.

With the latest software and productivity enhancing features, the SCT optimizes the offsite building of small components.

Results Driven

Efficient

An automated jigging system improves truss assembly through rapid computer-controlled setups.

Adaptable

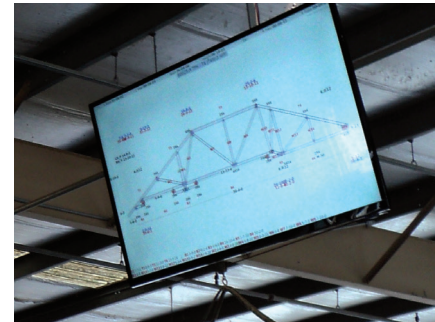
The software offers a streamlined user experience and interface. Enriched graphics are easy to view with simple adjustments.

Comprehensive

View the truss on screen, with plate information, lumber size, and dimensions.

EQUIPMENT SPECIFICATIONS

Axis Travel Length	6' 1" (with every other puck offset)
Puck Spacing	18" on center
Puck Speed	<30 sec. for full-length movement
Input Voltage	208-240VAC 3PH 60Hz
Input Current	40A
Air Requirement	2 CFM @ 80 PSI
Operating Temperature	-32° F to 104° F
Mechanical	Steel frames with plastic table tops
	Dimensions: 7' x 21'
	Six each side ejecting liftouts with independent control of each unit
	SpeedSet Automation - chain drive system
Table Dimensions	21' 4" Length
	7' 1" Width
	2' 7" tall from feet to table surface
Axis Information	28 pucks - 14 normally top pucks and 14 normally bottom
	Spacing 18" on center for top pucks and bottom pucks across the table
	Actual is spacing between pucks is alternating from 5.125" to 12.875" repeated across the table
Lift Outs	Six (6) Liftouts with 100 mm stroke
	The liftouts are controlled by the software touchscreen only
	Smart liftout system defines what liftout is below the truss and only activates those liftouts
Table Construction	Plastic and wood top for adding custom jiggging if needed on smaller jacks
Controls System (optional)	SmartView display integration to show the truss data and dimensions over the table



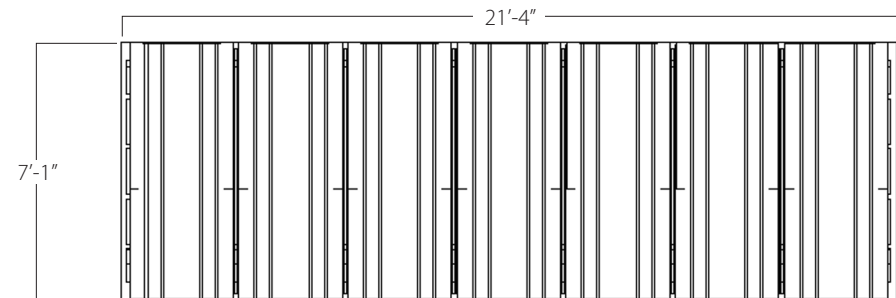
SmartView Screen



Dual Pucks

FEATURES

- Dual puck unit
- Computer station with control and SmartView software
- New plastic table tops
- Plastic protector pieces reduce puck wear
- Reliable chain-driven system
- Self-cleaning channels
- Plastic top provides the ability to add blocking



Standard footprint