

# GOOD CONNECTIONS®



 FALL 2024

8 The Legacy Continues

11 Paperspace for the IntelliVIEW® Suite

13 Project Spotlight – Alpine® TrusSteel



6

Alpine  
BCMG 2024 Preview  
Booth #337



## CALENDAR OF EVENTS

# 2024-25 UPCOMING U.S. & CANADA HOLIDAY OFFICE CLOSURES

## U.S.

**Thanksgiving Holiday**  
Thursday, November 28  
Friday, November 29

**Christmas Holiday**  
Tuesday, December 24  
Wednesday, December 25

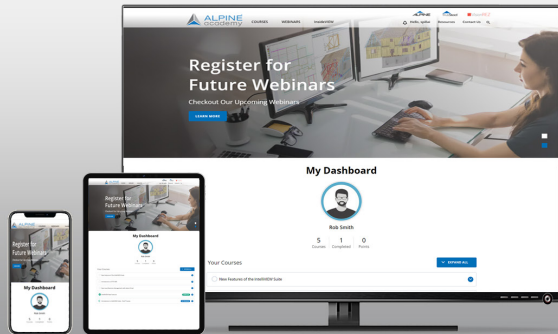
**New Year Holiday**  
Wednesday, January 1

## CANADA

**Thanksgiving**  
Monday, October 14

**New Year Holiday**  
Wednesday, January 1

**Holiday Closure**  
Tuesday, December 24 – Friday, December 27



## SIGN UP NOW!

Alpine® Academy.  
Learn at your convenience.

If you have suggestions for a class or questions, please email us at [training@alpineitw.com](mailto:training@alpineitw.com).



Alpine TrusSteel provides the perfect solution for an elementary school project – pg. 13

## TABLE OF CONTENTS

- 3 Observations
- 4 Industry News
- 4 New Organizational Appointments
- 6 BCMC 2024 Preview
- 8 Alpine Linear Saw 5.0 – The Legacy Continues
- 11 Paperspace for the IntelliVIEW® Suite
- 13 Project Spotlight
- 14 Another Weapon in Your Arsenal
- 15 Ask Alpine

### Publishers Note:

Good Connections® is published by Alpine® for its customers, associates, builders, architects, building officials, and other professionals interested in the building components industry.

At Alpine, "Good Connections" refers to the quality products and services we offer as well as the connections we have with our customers and the components they provide to the building industry.

We appreciate story ideas, project photos, and other suggestions that you have to make this an even better publication. For more information, contact [marketing@alpineitw.com](mailto:marketing@alpineitw.com).

©2024 Alpine, a division of ITW Building Components Group Inc.



**Matt Davis**

Vice President &  
General Manager

Matt Davis is the Vice President and General Manager responsible for overseeing the Alpine® business. Since his tenure at ITW in 2000, Matt has held various operational and commercial roles across multiple divisions. He has previously served as the Vice President and General Manager for Commercial Construction of North America as well as ITW Medical.

Since joining Alpine, my primary goal has been to understand—to understand the dynamics of the component manufacturing industry and the challenges as well as the opportunities facing our customers. I have learned several things:

**We are all facing uncertainty.** Uncertainty about the economy. Uncertainty about interest rates. And uncertainty about the near-term outlook for housing starts. Although we do not have a crystal ball, we do know there is significant pent-up demand for housing. Some sources estimate an unmet housing demand in the U.S. of more than two million units. This deficit will ultimately translate into a demand for components and the value they bring to the home building process.

**This industry is incredibly resilient.** We have been forced to navigate a global pandemic, unprecedented supply chain disruptions, and large demand swings in both directions. We have withstood these challenges and emerged stronger as a result, better prepared to face the unpredictability of the future than ever before.

**Partnership is critical for success.** A strong partnership is critical to face our mutual challenges, but more importantly to unlock the future of the industry. Bringing meaningful innovation to

the market requires strong relationships built on trust and mutual success. An old proverb says, “If you want to go fast, go alone. If you want to go far, go together.” How well we partner will determine how far we can go to shape the future of component manufacturing and the broader construction industry.

The upcoming BCMC show is an amazing opportunity for us to come together and strengthen our longstanding partnerships, as well as forge new ones. It is a chance to collaborate and shape our shared vision for the future. Join us for an unforgettable evening at our Customer Appreciation Event on Wednesday, October 9. It will be hosted at the iconic, boutique Iron Horse Hotel and promises to be an experience you won’t want to miss.

As always, Alpine will proudly continue to partner and support our customers. Let’s see how far we can go—Together.

See you in Milwaukee!

A handwritten signature in blue ink, appearing to read 'Matt Davis'. The signature is fluid and cursive, written on a white background.



## INDUSTRY NEWS

### BCMC 2024

Building Component Manufacturers Conference (BCMC) and Framar Summit (FS) 2024 will be held on Monday, October 7 through Friday, October 11 at the Baird Convention Center in Milwaukee, Wisconsin. Stop by booth #337 to learn about our latest component manufacturing innovations. [LEARN MORE](#)

### Housing Starts

Overall housing starts in 2024 in the US rose to an annualized rate of 1,314,000. This rise demonstrates a rebound from the 4.6% decline in the previous months and is firmly above the market expectation of 1,300,000 starts. This continuous rise depicts a positive outlook on housing starts for the upcoming months. [LEARN MORE](#)

### Housing Market Predictions for 2025

Originally published by Fast Company in July 2024, housing analysts expect the U.S. housing market to rise 2.5% in 2025. [LEARN MORE](#)

### IBS 2025

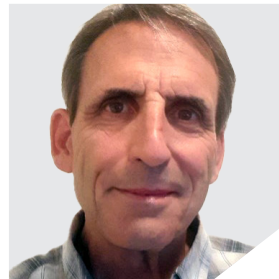
Visit Alpine® at booth #C1835 at the upcoming International Builder's Show 2024 from Tuesday, February 25 through Thursday, February 27 at the Las Vegas Convention Center in Las Vegas, NV. [LEARN MORE](#)

## NEW ORGANIZATIONAL APPOINTMENTS



### Grace McCord District Sales Manager

Grace McCord has joined Alpine as a District Sales Manager in the Florida region and will be working with CMs in Mississippi, Alabama, and Georgia.



### Gilbert Morris Help Desk Analyst

Gilbert Morris has joined Alpine as a Help Desk Analyst. He is responsible for providing software support for Alpine Software.



### Annette Peterman, Software Consultant Lead

Annette Peterman has been promoted to Software Consultant Lead. In this role she is responsible for providing customer support to maximize the value of Alpine Software.



### Rachel Trischetta Software Consultant

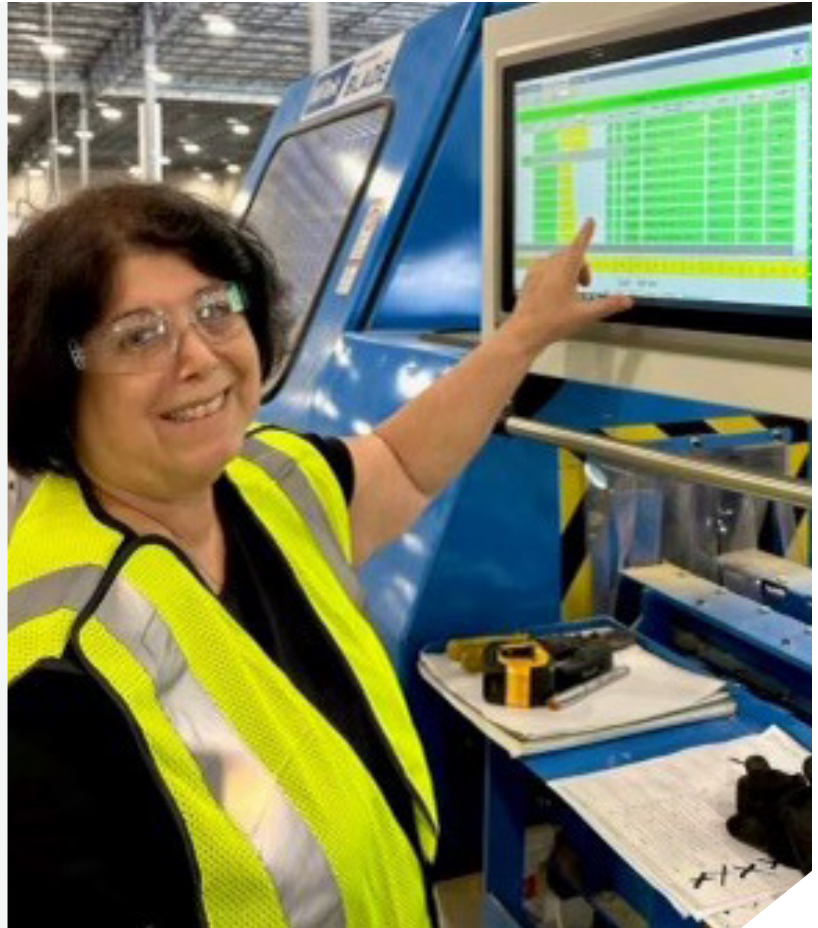
Rachel Trischetta has joined Alpine as a Software Consultant. In this role, she is responsible for providing customer support to maximize the value of Alpine® Software.

**Discover your potential with Alpine!** We're proud to promote a collaborative, inclusive, and creative work culture. Learn how you can join our team: <https://alpineitw.com/about-us/careers/>

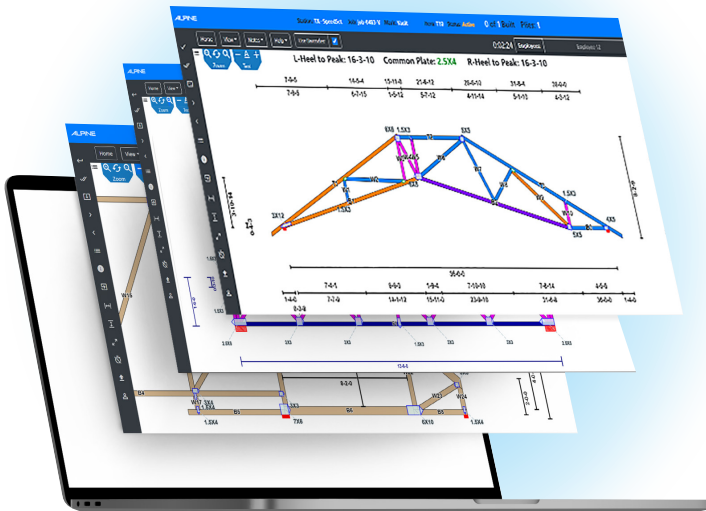
# CONGRATULATIONS

## Terri Voss

After over eight years in the component manufacturing industry with Alpine®, Terri Voss retired in June 2024. Terri's hard work and dedication to her craft were key to her success during her time as a Software consultant Lead as well as Software Tester. We congratulate Terri on a great career and wish her the very best in retirement!



## eSHOP | PLANT MANAGEMENT SOFTWARE MADE EASY



### Manage All Production Activity with One Platform

Manage roof truss, floor truss, and wall panel production activity all on one platform.

### Intuitive Web-Based Manual Shop Stations

Access from any device with a browser, without the need to install the software on each station.

### Seamless Automated Equipment Integration

Supports Alpine® & multiple third-party equipment. Save time, increase efficiency and accuracy.

## BCMC 2024 PREVIEW

Alpine® Showcasing the Latest Innovations & Products at BCMC 2024



The unveiling of the Alpine® Linear Saw (ALS) 5.0 introduces a new generation of performance featuring stacking capabilities.

We are excited to exhibit at the Building Component Manufacturers Conference (BCMC) and Framers Summit in Milwaukee on October 9-10, 2024. Exhibiting at booth 337, we will be highlighting the latest innovations designed to make component manufacturers (CMs) more profitable and competitive. Live product demonstrations will showcase productivity enhancements and tools that empower designers.

### ALPINE SOFTWARE

“We are committed to leading the industry with innovative solutions that drive our customers’ competitiveness and profitability,” said Rick Tilelli, Director of Software Development at Alpine.

“In close collaboration with industry leaders, we continue to modernize our software platform with advancements, ensuring Alpine products are shaped through customer-back innovation. This strategy ensures the delivery of technological solutions that meet the evolving needs of component manufacturers. Empowering our customers to maintain a competitive edge – to Build More.”

The Alpine Team welcomes the opportunity to share the new IntelliVIEW® Suite 2024 Series highlights with attendees.

**Paperspace** is a new integrated plan finishing tool in iModel that streamlines the process of creating construction documentation. Designers are able

to prepare component layout plans with a set of CAD and annotation tools to communicate key placement information and project details.

**Load Areas** is a powerful new tool in iModel designed to enhance and simplify the repetitive, and time-consuming process of applying special load conditions. It allows designers to input truss loads within a defined region accurately and simultaneously, saving valuable time and effort.

**IntelliVIEW® Cloud** provides browser access to existing IntelliSheets, job details, and more. Access live data on the move for more efficient communication with customers and partners.

**An enhanced integration with BEDC's ROME** provides seamless access to jobs through iCommand® while working with a third-party design service, Building Engineering and Design Co (BEDC). This allows CMs to leverage the relationship of a design service while maintaining the convenience and efficiency of the comprehensive set of job management tools within iCommand®.

## ALPINE EQUIPMENT

We are committed to optimizing plant operations to ensure productivity as well as safety for CMs. BCMC will mark the debut of the next generation of the Alpine Linear Saw (ALS) and advanced safety features for the Alpine Rollerpress. "While maintaining the accuracy and reliability our customers have come to expect with the ALS, we are now introducing

enhancements focused on maximizing board footage per shift, improving the handling of small components, and preventive maintenance capabilities," said Vennor Hackshaw, Equipment Business Unit Manager. There will be live equipment demonstrations, offering attendees a firsthand look at the latest advancements.

The unveiling of the **Alpine Linear Saw (ALS) 5.0** introduces a new generation of performance. The live demonstrations will highlight the latest innovations of the saw, including a new automated double-stacking infeed, improved cutting capacity and speed, a small component delivery system to the outfeed, enhanced printing capabilities, and waste minimization. The ALS 5.0 also features a new user-interface, cut optimization, and maintenance dashboard. These innovations help streamline the production process. See it in action and watch the sawdust fly.

The new safety options for the **RollerPress** help ensure a safer plant environment as well as productivity. Available as a factory option or retrofit to select models, the new configurable guarding options, light curtain technology, and small component handling solution were engineered with worker safety in mind.

With set up in less than 25 seconds, the **AutoSet Plus Table** sets benchmarks in truss production efficiency and accuracy. This computer-controlled system is easy to learn, use, and maintain. Automated steel pucks help workers maintain a consistent workflow with higher accuracy and reduced assembler fatigue.

## Book Your Private Demo

Email [info@alpineitw.com](mailto:info@alpineitw.com) now to book your private software or product demonstrations. Take an opportunity to see the Alpine® technology in action and how it can add value to your business – Build More.

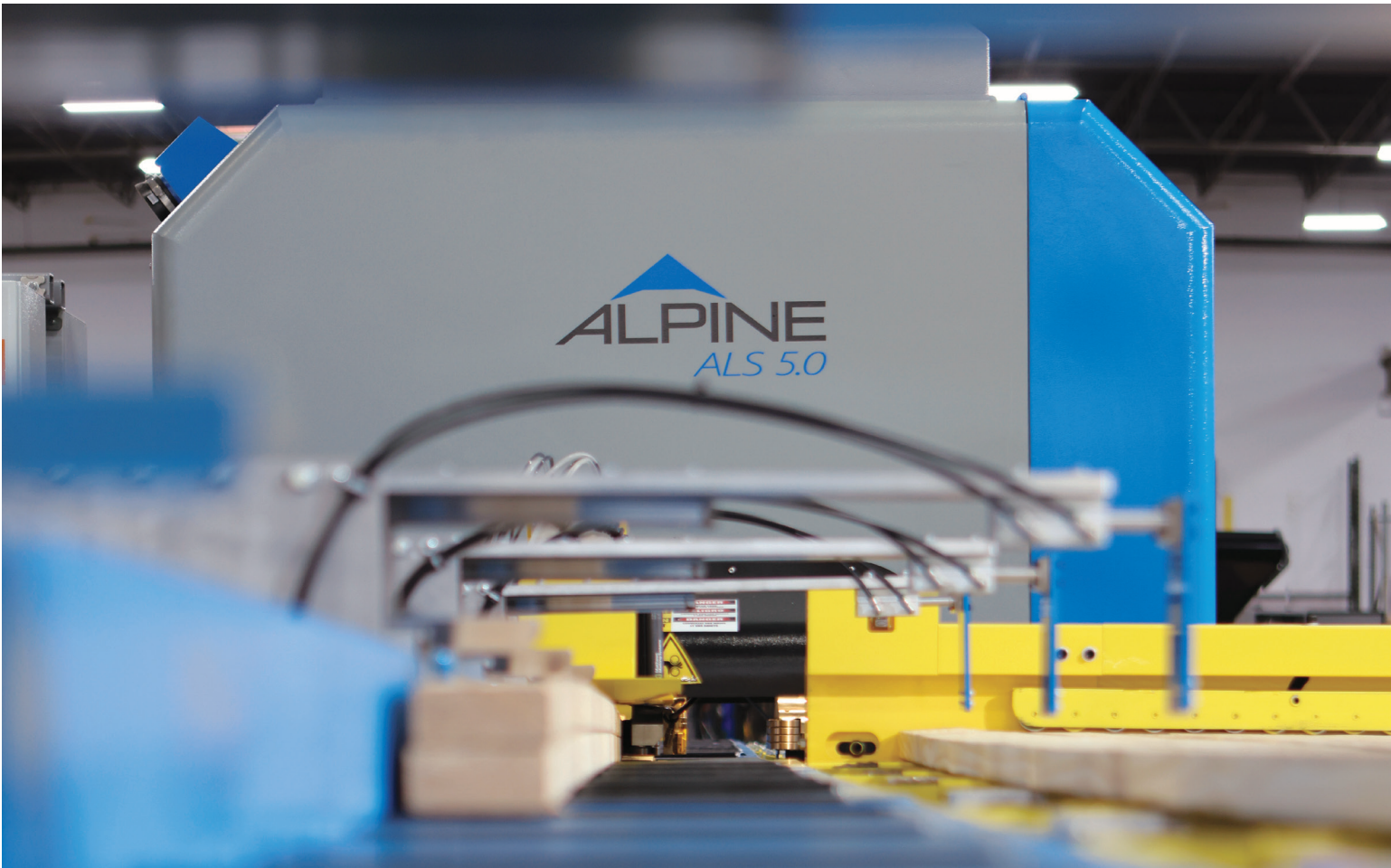
## THE LEGACY CONTINUES

Introducing the Next Generation of the Alpine® Linear Saw

AUTHORS

**Brian Zengel** | Equipment Product Manager

**Kevin Albert** | Equipment Product Specialist



The new Alpine Linear Saw 5.0

*Coming in 2025* – Alpine® is excited to announce the evolution of the Alpine Linear Saw (ALS) with the introduction of ALS 5.0. Building on over two decades of reliability, durability, and accuracy, this latest version continues Alpine's proud tradition of innovation.

### **BUILT LIKE A TANK**

The ALS 5.0 represents the continuation and enhancement of features like robust mechanical design, consistent accuracy, dependability, and ease of maintenance. While similar in appearance



to previous versions, the 5.0 offers the potential for substantial productivity increases in board footage per shift.

In today's truss plants, productivity is essential. The right equipment will help alleviate labor inefficiencies, accuracy issues, and backlogs, in turn boosting profits. The new ALS 5.0 features include the ability to stack boards, eject small parts directly to the outfeed, and software improvements, representing the cutting-edge of modern linear saws.

### SPEED IMPROVEMENTS

Behind the scenes, the Alpine Software Team has improved an already robust software package. Sawyers, as well as other users, have come to expect reliability, accuracy, and ease of operation as core tenets of our saws, and the new backend of ALS 5.0 positions users to achieve sizable gains in outfeed speeds.

The ALS 5.0 software package also features a Maintenance Dashboard designed to lower

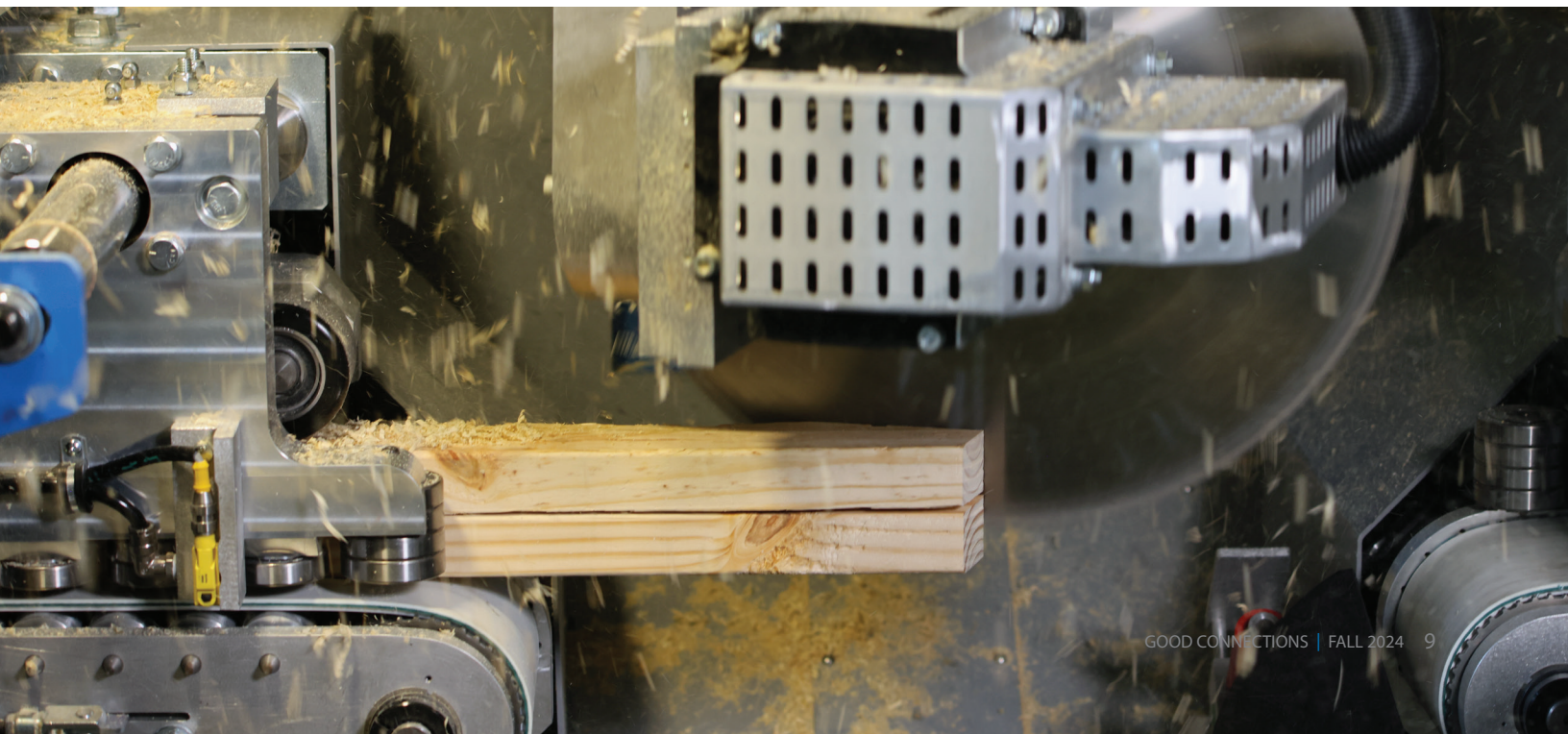
ownership costs and improve productivity. It provides preventative maintenance reminders, service/repair guidance, a resource library with on demand instructional videos, and an option to book repairs with Alpine Technicians.

The new software is engineered to help reduce waste via industry-leading optimization, and the square-cut waste allows for reuse of longer waste components.

### DOUBLE STACK

An improvement for the ALS 5.0 lies in its automated lumber function. The ALS 5.0 can double stack up to 20-foot stock lengths, allowing for maximum lumber throughput. The saw will automatically queue the next stack of boards as soon as the previous stack enters the saw cabinet. Sawyers will have complete control over this feature. When the feature is enabled, Alpine's software will optimize identical components from the job file to increase cut productivity and deliver more identical components – faster.

New double stacking capabilities to improve productivity.



Designed with component manufacturers in mind, the ALS 5.0 represents significant advancement in linear saw technology.

### SMALL PARTS HANDLING

The days of sawyers manually sorting through the waste bin for small parts are gone. The ALS 5.0 is equipped with a state-of-the-art small parts handler that delivers small components directly to the outfeed. This innovation improves material handling by preventing small parts from ending up in the bottom of the saw cabinet. As a result, it simplifies the cutting process and provides a centralized delivery point while improving ergonomics and safety for employees.

### PRINTING IMPROVEMENTS

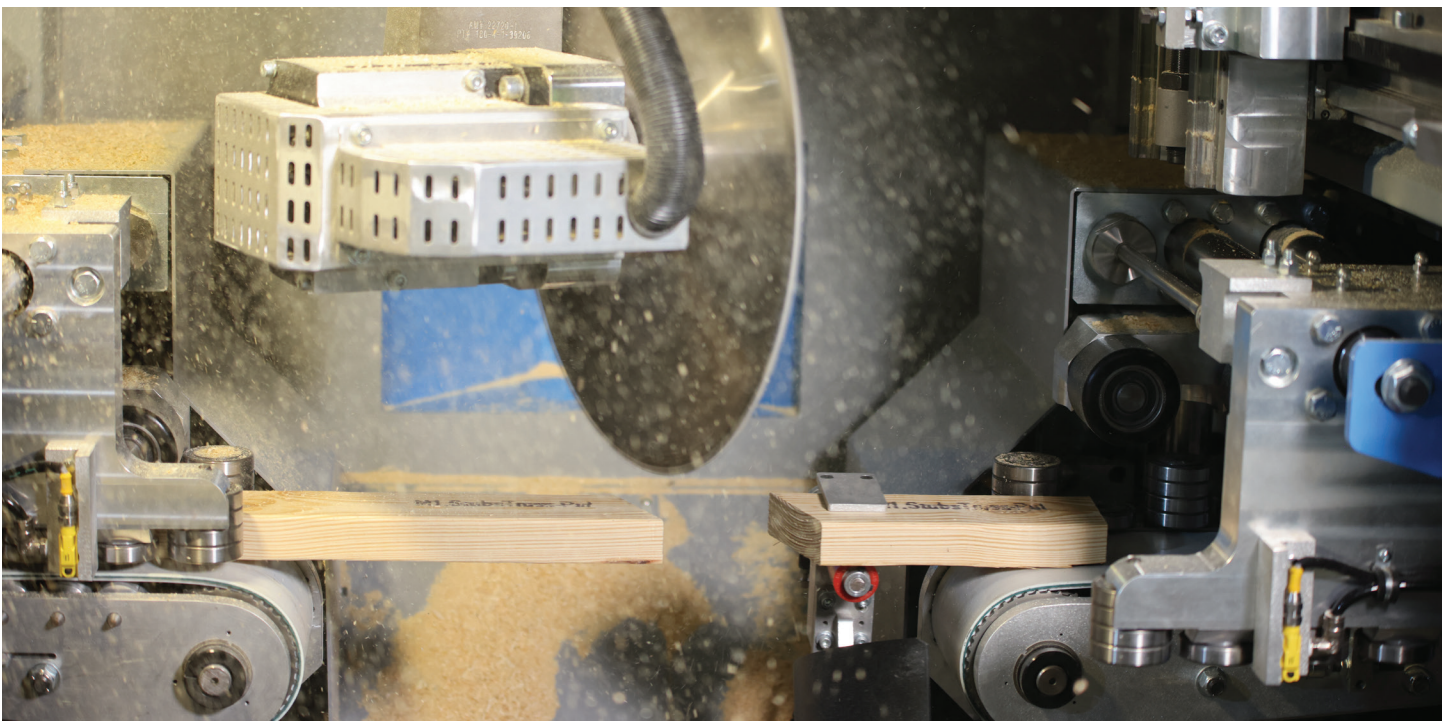
The ALS 5.0 features two upgraded high-resolution printers for quick, legible output on board members. Both printers operate simultaneously with edge

printing that marks double stacked boards for easy identification at the assembly table. Other enhanced features include plate alignment marking and jig point identification (matching letters at connection points in the truss). These improvements support faster component identification, quick jig assembly, consistent plate alignment and placement.

### NEXT GENERATION EFFICIENCY

Designed with component manufacturers in mind, the ALS 5.0 represents advancement in linear saw technology. It offers reduced total cost of ownership, preventative maintenance tools, and optimized cutting workflow and material handling improvements. A testament to Alpine's dedication to innovation.

Equipped with a small parts handler that delivers components directly to the outfeed.

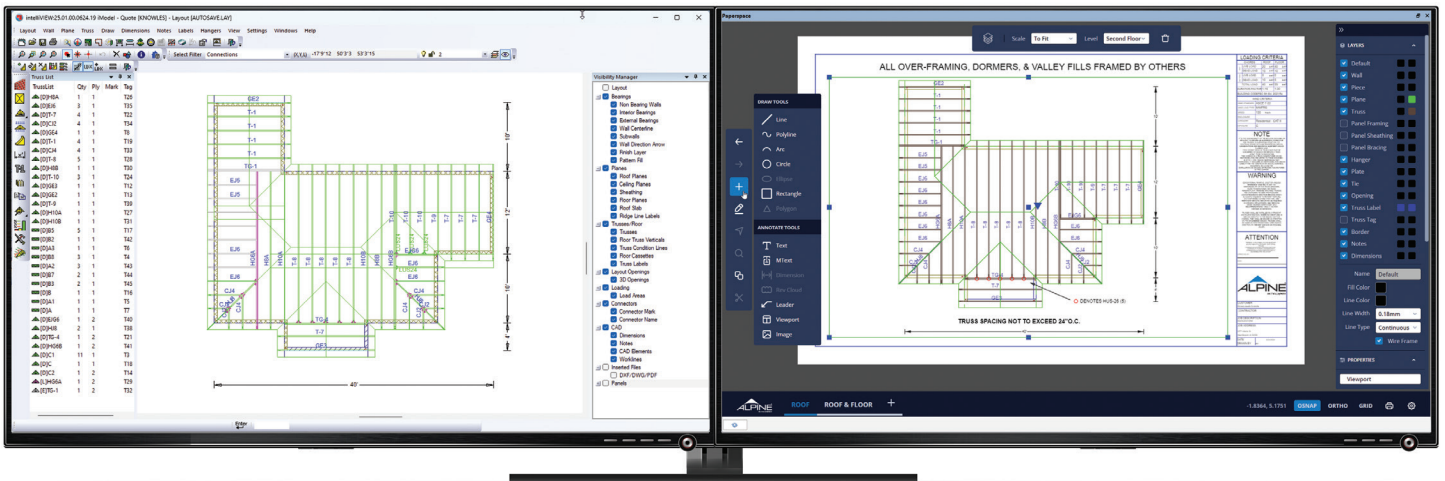




**Matthew Bobrowicz**  
Alpine Product Owner

# PAPERSPACE FOR THE INTELLIVIEW® SUITE

Introducing Paperspace with IntelliVIEW® Suite version 24.02. This comprehensive plan finishing solution is seamlessly integrated within iModel, offering component designers a parallel workflow to the component layout.



Integrated plan finishing tool within iModel.

Paperspace features an intuitive user interface, enabling designers to efficiently manage professional construction documentation.

## USER-FRIENDLY INTERFACE

The tool provides users the flexibility to use it side-by-side with the layout on the same or separate displays for a more efficient workflow. The intuitive—yet, familiar—interface empowers designers to create sheets of finished drawings quickly and simply. It also helps users separate the clutter of finished drawing details from component design layout.

Create sheets in several common sizes and apply borders unique to the project—with your branding and

information that matters. Save time by leveraging information already stored in iCommand® to automatically populate the border template, making it easier to stay focused on each project’s unique detailing.

## A SET OF EDIT, DESIGN, AND ANNOTATION TOOLS

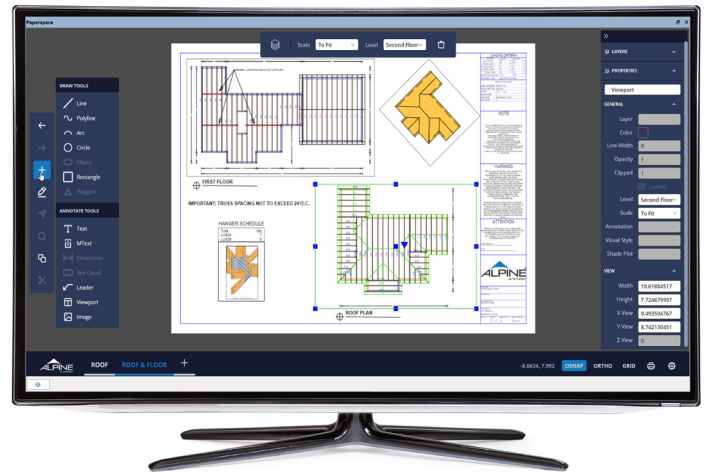
Use viewports to display different views of the design layout. Whether a single-story structure with a set of components or a multi-level structure, users have the ability to create a single sheet with multiple viewports, or dedicated sheets for each level and/or product. Each viewport has layer and property controls to tailor each sheet.



A set of basic tools for creating and editing objects to highlight important notes for builders, contractors, or installers.

When last-minute component design changes occur, the associated viewports in Paperspace will automatically update.

Manage the finer annotation details with a full array of familiar CAD tools along with rich text elements for a clean and professional finished drawing. Quickly draw CAD elements to create framing details, enclose critical notes, or insert leader lines to highlight key information at specific



From the right panel, quickly view, scale, or modify the Viewport's properties. The lower right menu also allows users to easily toggle between object snap (OSnap), orthogonal drawing (Ortho), and grid features.

locations. The modern text interface allows users to enter detailed notes unique to the layout with professional font types, styles, and sizing.

Paperspace for the IntelliVIEW® Suite is a valuable solution for component manufacturers to create professional construction documentation, with a simple, user-friendly interface. Contact your local Alpine® Sales Representative for more information.



[Click here](#) to see how the Paperspace tool can help designers efficiently manage construction documentation.

## ALPINE® TRUSSTEEL PROJECT

Project: Bob Sikes Elementary School

Location: Crestview, Florida

Trusses Design & Manufactured: Cascade Mfg Co (Cascade, IA)



Alpine® TrusSteel project featuring 79 ft.-10 in. span.

### OVERVIEW

To meet safety standards and architectural requirements for the facility, the design for the elementary school required the use of non-combustible materials and a roof framing system capable of spanning nearly 80 feet. The Alpine® TrusSteel cold-formed steel trusses, manufactured by Cascade Mfg Co., provided the perfect solution for all parties – the architect, structural engineer, and general contractor.

The transportation was simplified by separately delivering the soffit/fascia overhangs. The truss system's out-of-plane rigidity, achieved through symmetrical chord and web members secured with patented double shear screws, eased installation with the use of a standard crane and spreader bar. With the building now under roof, the Cafetorium is expected to be completed by spring of 2025.

## ANOTHER WEAPON IN YOUR ARSENAL

Article courtesy of SBCA – Structural Building Components Association

Top chord-bearing trusses have several advantages building designers should know about

The more weapons you have in your arsenal, the easier it is to find a way to be a hero to your customer. One clear opportunity already in a component manufacturer's (CM) arsenal is the top chord-bearing floor truss (TCB truss). The end condition of a TCB truss, where the top chord of the truss sits directly on the bearing location, provides several potential benefits.

The TCB truss provides greater flexibility to the building designer when it comes to a building's elevations. With a TCB truss, floor truss depths can be increased for greater spans or greater stiffness without increasing the height of the floor. In addition, if needed, overall building heights can more easily be minimized with TCB trusses by adjusting wall heights rather than floor depths.

Having TCB trusses in a multi-story building also eliminates the need for rim board on the exterior of the buildings. Rim board can periodically be hard to source, takes significant time to install, and is typically expensive (see sidebar). In addition, because it is often made from engineered wood products that can be more susceptible to weatherization during construction it can create unintended installation challenges.

TCB trusses can also be beneficial when there are mid-bearing conditions, because it allows the girder or beam to be incorporated into the floor dimension. This eliminates the necessity for drop beams and



allows the building designer to preserve a consistent ceiling height. Alternately, TCB trusses can eliminate the need for expensive hangers when tying trusses into a beam or end wall. The ability to incorporate beams into the floor dimension can also be beneficial when it comes to rough opening headers in exterior walls. For instance, TCB trusses can be designed to allow a window rough opening height to extend all the way to the ceiling height. [CONTINUE READING](#)



[Click here to read the full article  
"Another Weapon in Your Arsenal"  
in SBCA Magazine](#)



ASK  
ALPINE

## Q: WHAT IS THE NEW ASCE 7-22 IMPLEMENTATION IN IDESIGN?

**A:** The ASCE 7-22 implementation in iDesign supports new snow loading implementations to ensure every project is updated with the most up-to-date loading standard for general structural

design. Users can access a separate tab to insert specific information regarding possible snow loading within a given area to ensure the project is fully covered against any environmental factors.

### IntelliVIEW® SOFTWARE 24 SERIES



#### STITCHER® Reimagined

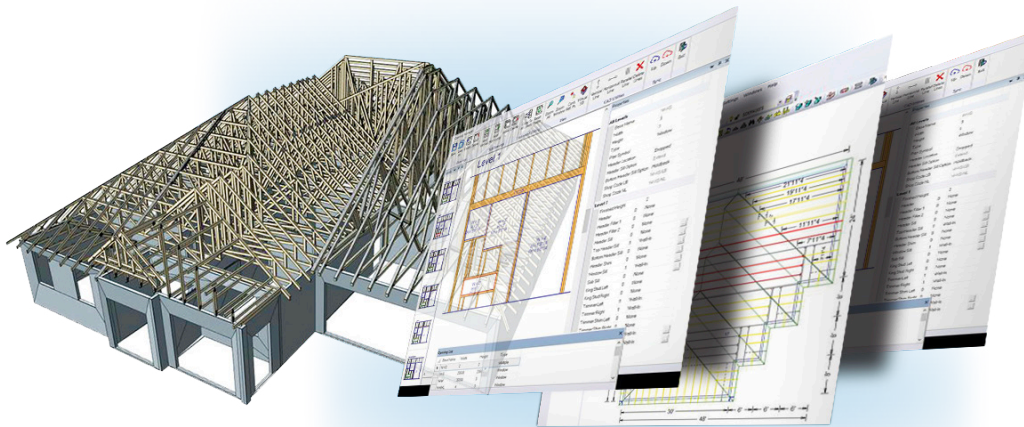
A new user experience for a better, faster workflow to take designers from drawing review to 3D model like never before.

#### New Paperspace Tool

2D page layout environment for creating professional construction documentation.

#### Load Areas Tool

A single, dynamic tool designed to apply truss loads within a region accurately and simultaneously, including point, line, and polygon area loads.



#### Engineering Performance

Enhancements to support ASCE 7-22 requirements for more resilient, efficient designs.

#### IntelliSheets Enhancements

Create custom spreadsheets and job lists. Introducing new editing capabilities and security features.

#### Floor Cassettes

Access tools to design cassette assembly and quickly create construction drawings.

#### Web Dashboards

Graphical web-based representation of job production data.



# Need Help?

Solve a problem, read expert articles, watch online tutorials and access top-notch support when you need it. At Alpine®, we provide our customers with the ultimate support experience. Our passionate Help Desk team is ready to assist every step of the way to ensure you always get the most out of our software.



Help Documentation



Solutions Network



Alpine® Academy



Contact Support

**BUILD** MORE.  
alpineITW.com | 800.521.9790

