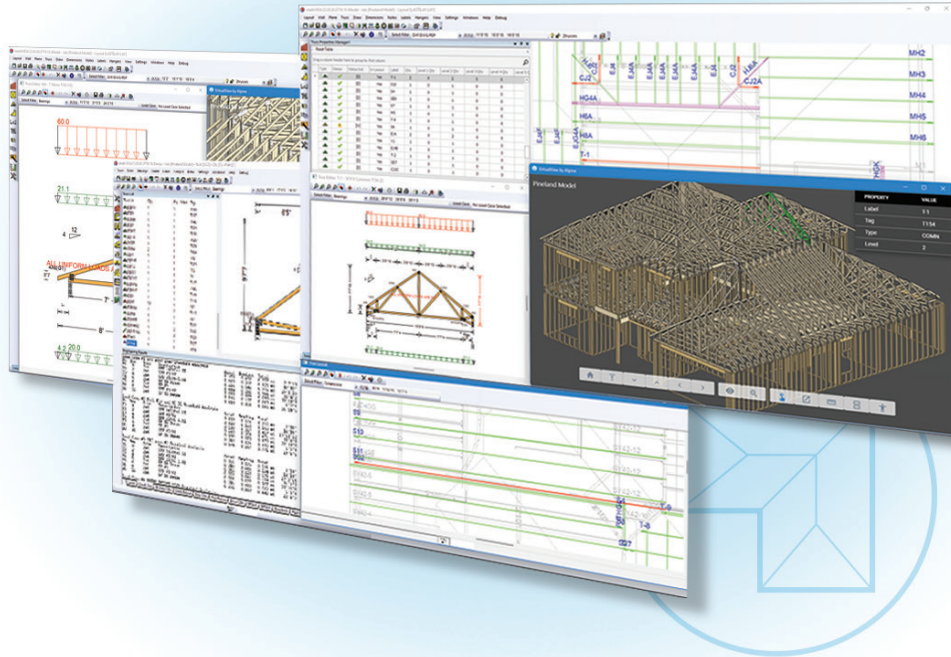


iPanel

Design wall layouts, panelize, break, stack & build.



Industry leading panel creation by design.

iPanel, a valuable IntelliVIEW® app, is a robust panel design tool for component manufacturers. iPanel manages all the information needed to design, estimate, manufacture, and install wall panels. It contains a complete set of tools to create, detail, review, and change panels easily. An easy-to-use graphical user interface allows designers to quickly add or modify virtually any panel framing condition. It provides designer confidence and timesaving when creating a complete layout and material take-off while offering accurate and flexible costing tools.

Alpine's software integration is an industry leader, allowing the panel and truss designers to share layout information from iModel to iPanel and back with no extra steps required. eShop Panels finalizes a valuable information loop which allows users to seamlessly integrate the design phase with day-to-day shop production.

Panel Creation Simplified

Improve Onsite Installation
The Panel Stacker automatically organizes, bundles, and stacks panels in a specific sequence for production and shipping.

Parametric Design Capabilities
Intuitive creation of parametric components and subcomponents.

iPanel with STITCHER
Save up to 75% of designer's time inputting walls and openings.



Frame buildings quickly, per builder specs, without significant manual effort.

Complete Set of Tools

Panel input workflow optimizes efficiency with a complete set of tools that enables designers to detail panels in plan and elevation views.

iPanel with STITCHER®

Helps panel designers save up to 75% of their input time for walls and openings.

Easily Create and Edit Openings

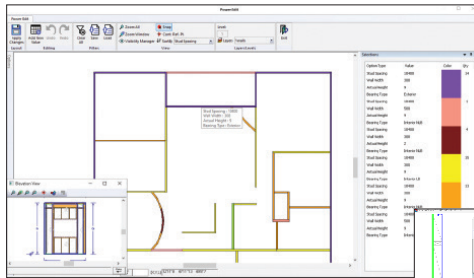
The creation of openings is intuitive; a rough opening can be framed according to user specifications for different conditions and levels.

Reviews Made Simple

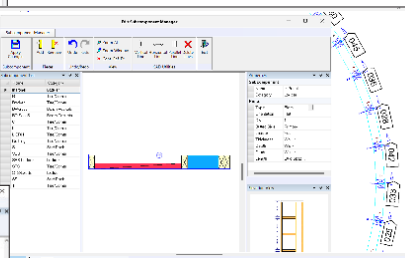
Design changes can be reviewed and applied rapidly, saving time, and eliminating errors and back charges.

Parametric Design Capabilities

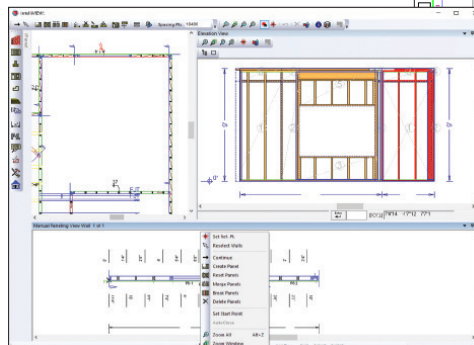
Save time creating openings and subcomponents by automatically sizing to design parameters while reducing list management.



Review and edit wall, panel, and opening properties with Power Edit



Effortlessly create and edit subcomponents



Break panels with intuitive and comprehensive UI

FEATURES

Panel input workflow optimizes designer efficiency.

Sheathing tool for precise wall and panel sheathing. Select, trim, and splice sheathing to spec.

Version History ensures dynamic regeneration of panels while maintaining previous modifications.

Panel Design, Break, and Review allows designers to divide a wall into multiple panels. Create and merge panels, modify openings and subcomponents while reviewing the wall with high precision.

An enhanced Wall Viewer to quickly review wall design and integrity.

Conveniently manage fabrication rules and openings from a central location using the iCommand® security system.

Openings and framing rules are shared among different jobs or projects with ease.

Predefined library to simplify block framing, copying, and editing.

Easy-to-use padding tool to help create a gap between interconnected walls while maintaining the junction's integrity.

Simplify the panel review process with Power Edit. Visually identify specific wall properties and apply modifications efficiently.

Please contact your Alpine® Sales Representative for a demo or more information.