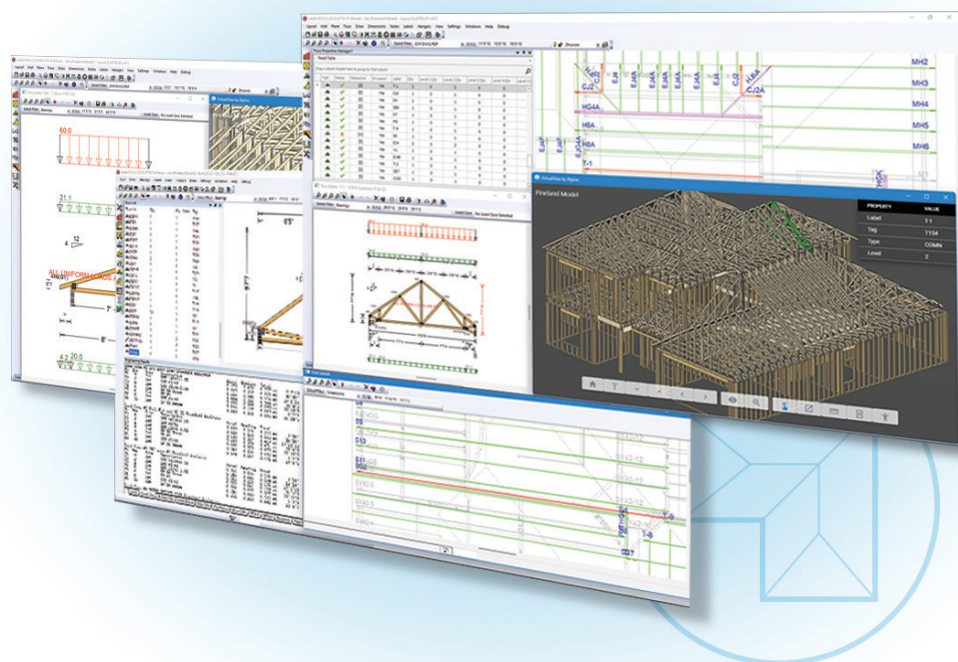


# iModel

Design truss layouts & profiles.



Truss framing made simple, accurate, and flexible with iModel's industry-leading truss condition methodology, facilitating faster input and selective edits.

As part of the integrated IntelliVIEW® Suite, iModel offers designers powerful 3D modeling and layout tools to define the building envelope, along with roof and floor framing. Wall and plan input time is reduced drastically by leveraging STITCHER®, the innovative plan-tracing technology, with iModel's intuitive workflow.

Integrated with iDesign, iModel provides unprecedented freedom for designers to match the best approach to the job at hand – for maximum design efficiency.

Truss and panel designers can easily share design information between iModel and iPanel, while iCommand® automatically manages the data.

## Design with Purpose

### New Load Areas Tool

A single, dynamic tool designed to apply truss loads within a region accurately and simultaneously, including point, line, and polygon area loads.

### New Visibility Manager

Control visibility of layout elements such as trusses, CAD elements, notes and more with a click.

### Visualize Component Designs

The 3D Viewer tool, available within the IntelliVIEW Suite, displays all the elements found within the building envelope and layout.



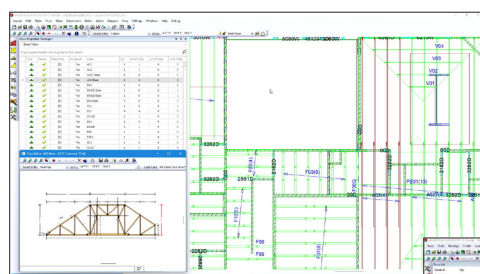
# Frame truss layouts as quickly and accurately as possible.

## iModel's Component Framing Input is Designed for Speed and Efficiency

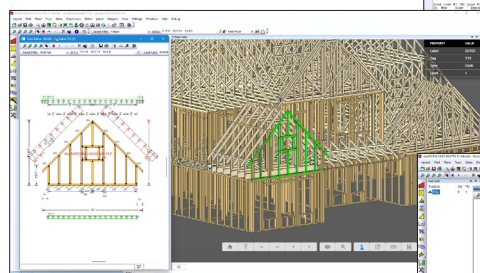
A complete set of tools for all construction segments allows the designer to increase their efficiency in both time and materials.

Define the building envelope quickly and accurately with the STITCHER® tool, reducing wall and opening input time by up to 75%.

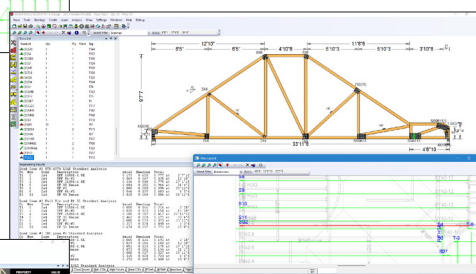
Robust set of framing tools allows the designer the ability to create virtually any truss for an integrated iDesign analysis.



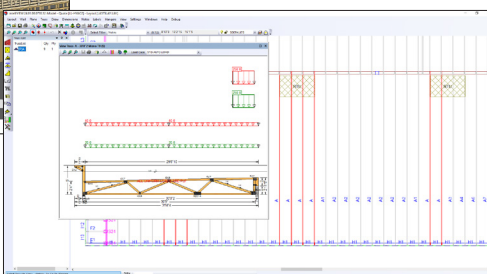
iModel presents all relevant layout information to the designer



View all aspects of the model in 3D to ensure accuracy



View individual trusses and their location on the layout



Define loads for all trusses in a region with the Load Areas Tool

## FEATURES

Easily input walls and solve roof planes from imported DWG, DXF, or PDF.

iModel's Component Catalog streamlines your process for all project types by saving engineering time and optimizing trusses in a library.

Work across all elevation levels with background engineering checks running automatically.

Frame and design Engineered Wood Products (EWP) along with truss and wall components.

Set up customized output batch selections for the different stages of production from bidding to manufacturing with the output processor.

Customized plan finishing is enabled through nanoCAD.

Frame jobs by condition, allowing for flexible and efficient truss input.

Edit trusses quickly and accurately, individually or in bulk.

Tools to automatically integrate horizontal or vertical openings such as stairs or ductwork into the truss design.

Truss Collision tool automatically identifies duplication or overlapping trusses in layouts.

A realistic, first-person perspective with the Walkthrough mode in 3D Viewer allowing designers to study components from within the model.

Quickly identify trusses in the layout and view its details with the Truss Properties Manager.

Please contact your Alpine® Sales Representative for a demo or more information.