

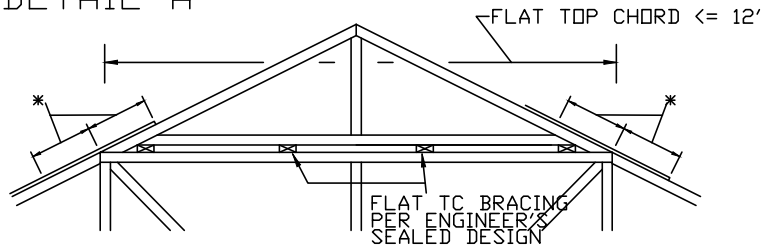
PIGGYBACK DETAIL

rev - Nov 2021
by - MB



Markham, On / Coquitlam, BC / Gatineau, QC

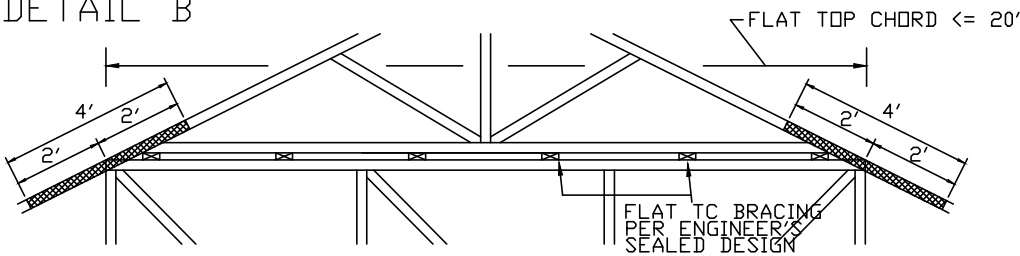
DETAIL A



PIGGYBACK CAP TRUSS TOENAILED TO ALL TOP CHORD BRACING WITH (2) 10d COMMON (0.148"x3") NAILS.

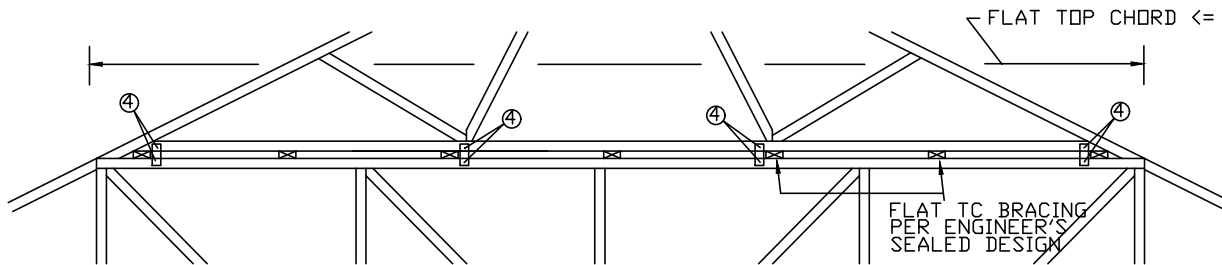
* 12' MIN RIGID SHEATHING OVERLAP WITH 8d COMMON (0.131"x2.5") OR GUN NAILS IN OVERLAP ZONE SPACED AT 4' O.C.

DETAIL B



PIGGYBACK CAP TRUSS TOENAILED TO ALL TOP CHORD BRACING WITH (2) 10d COMMON (0.128"x3") NAILS AND SECURED WITH 2X4 #3 GRADE SCAB (1 SIDE ONLY) ATTACHED WITH 10d COMMON NAILS AT 4' O.C.

DETAIL C



CAP TRUSS TOENAILED TO TOP CHORD BRACING AND SECURED WITH 3X8 TRULOX PLATES (EACH FACE) AT EACH END AND 1/3 POINTS.

CIRCLED NUMBER INDICATES REQUIRED NUMBER OF 0.120" X 1.375" NAILS, OR EQUAL, PER FACE PER PLY. SEE DRAWING 160 TL FOR TRULOX INFORMATION.



8" X 8" X 1/2" RATED SHEATHING GUSSETS (EACH FACE) MAY BE USED IN LIEU OF TRULOX PLATES, ATTACH WITH (8) 8d COMMON NAILS PER GUSSET, (4) IN CAP BC AND (4) IN BASE TRUSS FLAT TC.

THIS DRAWING REPLACES DRAWINGS 581,670 & 961,860

As per TPIC, Design Responsibilities, These PiggyBack details are general guideline used in the wood truss industry and need to be approved and completed by the building designer/engineer.

CCMC #12182-L, 12802-L, 13124-L

WARNING TRUSSES REQUIRE EXTREME CARE IN FABRICATING, HANDLING, SHIPPING, INSTALLING AND BRACING. REFER TO BCSI-BIC (HANDLING, INSTALLING, RESTRAINING AND BRACING), JOINTLY PRODUCED BY TPIC, TPI AND SBCA, AND AVAILABLE AT WWW.SBCINDUSTRY.COM/BCSI-CANADA FOR BEST PRACTICES PRIOR TO PERFORMING THESE FUNCTIONS. UNLESS OTHERWISE INDICATED, TOP CHORD SHALL HAVE PROPERLY ATTACHED STRUCTURAL PANELS AND BOTTOM CHORD SHALL HAVE A PROPERLY ATTACHED RIGID CEILING. ***IMPORTANT*** FURNISH A COPY OF THIS DESIGN TO THE INSTALLATION CONTRACTOR. ALPINE SYSTEMS CORPORATION SHALL NOT BE RESPONSIBLE FOR ANY DEVIATION FROM THIS DESIGN. ANY FAILURE TO BUILD THE TRUSSES IN CONFORMANCE WITH TPIC OR FABRICATING, HANDLING, SHIPPING, INSTALLING AND BRACING OF TRUSSES. DESIGN CONFORMS WITH APPLICABLE PROVISIONS OF CSA (OR CANADIAN STANDARDS ASSOCIATION), NBCC, AND TPIC. ALPINE CONNECTORS ARE MADE OF 6061 ALUMINUM OR 6061 GALV. STEEL, EXCEPT AS NOTED. APPLY CONNECTORS TO EACH FACE OF TRUSS AND, UNLESS OTHERWISE LOCATED ON THIS DESIGN, POSITION CONNECTORS PER DRAWINGS 160 A-Z. THE SEAL ON THIS DRAWING INDICATES ACCEPTANCE OF PROFESSIONAL ENGINEERING RESPONSIBILITY SOLELY FOR THE TRUSS COMPONENT DESIGN SHOWN. THE SUITABILITY AND USE OF THIS COMPONENT FOR ANY SPECIFIC BUILDING IS THE RESPONSIBILITY OF THE BUILDING DESIGNER, PER APPLICABLE TPIC DESIGN STANDARD.

www.alpineitw.com