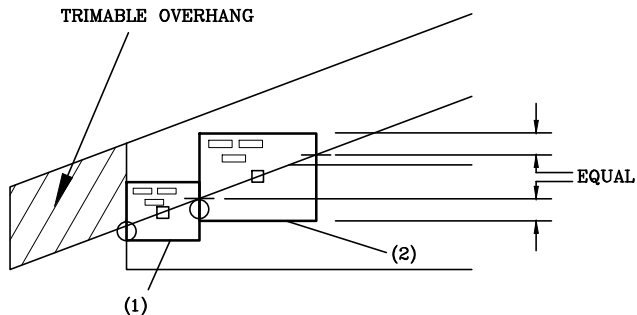


HEEL JOINT PLATE LOCATION DETAILS

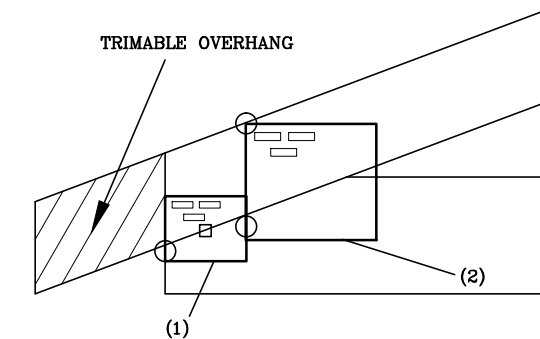
C1T

- (1) PLATE CENTERED VERTICALLY ON SCARF AND HELD FLUSH WITH END OF BOTTOM CHORD.
- (2) PLATE CENTERED VERTICALLY ON SCARF AND HELD FLUSH WITH PLATE (1).



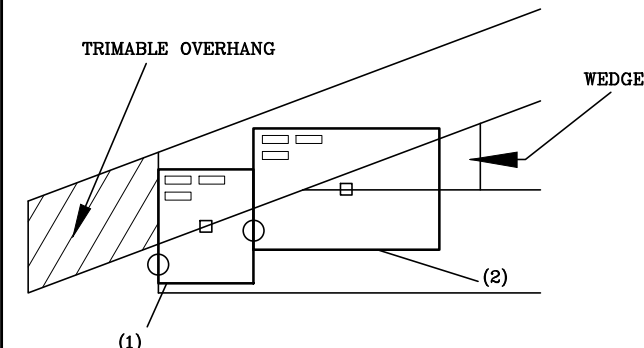
C2T

- (1) PLATE CENTERED VERTICALLY ON SCARF AND HELD FLUSH WITH END OF BOTTOM CHORD.
- (2) PLATE CORNER HELD AT TOP OF TOP CHORD AND FLUSH WITH PLATE (1).



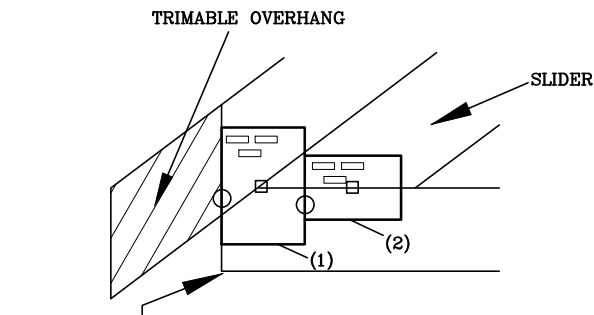
C3T

- (1) PLATE CENTERED VERTICALLY ON SCARF AND HELD FLUSH WITH END OF BOTTOM CHORD.
- (2) PLATE CENTERED VERTICALLY ON TOP EDGE OF BOTTOM CHORD AND HELD FLUSH WITH PLATE (1).



C4T

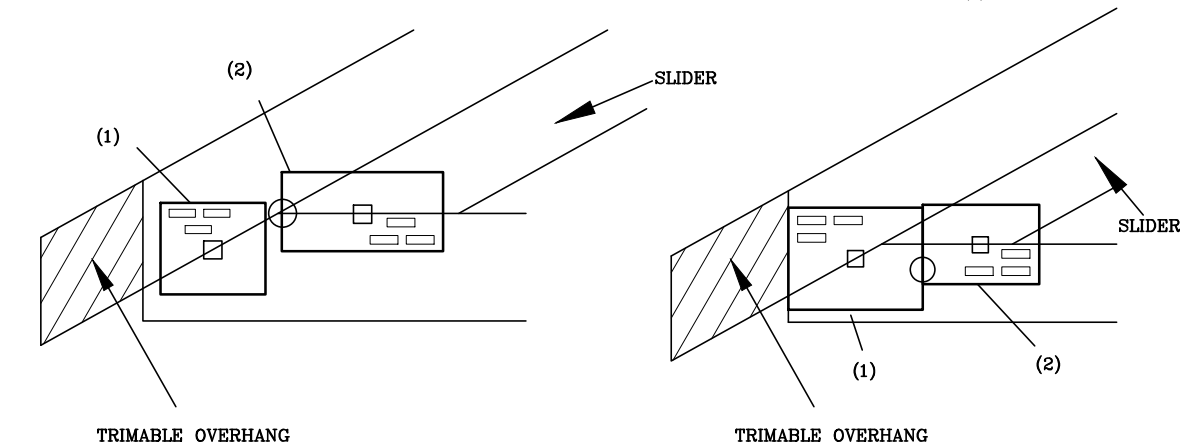
- (1) PLATE CENTERED VERTICALLY ON TOP EDGE OF BOTTOM CHORD AND HELD FLUSH WITH END OF BOTTOM CHORD.
- (2) PLATE CENTERED VERTICALLY ON TOP EDGE OF BOTTOM CHORD AND HELD FLUSH WITH PLATE (1).



- (1) FLUSH WITH ACTUAL OR VERTICALLY PROJECTED END OF BOTTOM CHORD.

C5T

- (1) PLATE CENTERED VERTICALLY AND HORIZONTALLY ON SCARF. (SEE A1 OR B1)
- (2) PLATE CENTERED VERTICALLY ON TOP EDGE OF BOTTOM CHORD AND HELD AT INSIDE CORNER OF SCARF CUT, OR FLUSH WITH PLATE (1).



- NOTES:**
- WEDGE/SLIDER MAY BE REQUIRED AS SPECIFIED ON SEALED DESIGN.
 - LOCATES PLATE CORNER OR FLUSH EDGE.
 - LOCATES PLATE CENTER.



155 Harlem Ave
North Building, 4th Floor
Glenview, IL 60025

NON-STANDARD HEEL

160 CT

C1T THROUGH C5T

DATE 10/01/14