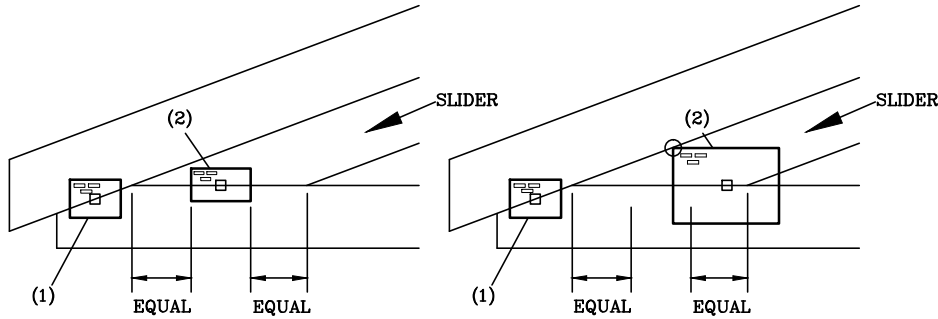


HEEL JOINT PLATE LOCATION DETAILS

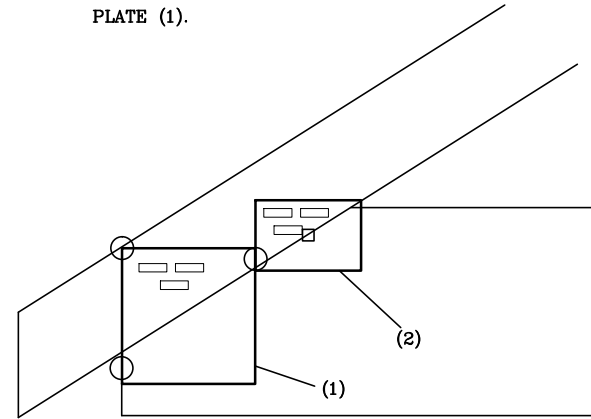
C6

- (1) SEE APPLICABLE DETAIL. (A1 SHOWN)
- (2) PLATE CENTERD VERTICALLY ON TOP EDGE OF BOTTOM CHORD AND EQUALLY SPACED AS SHOWN OR HELD AT BOTTOM EDGE OF TOP CHORD EDGE OF TOP CHORD.



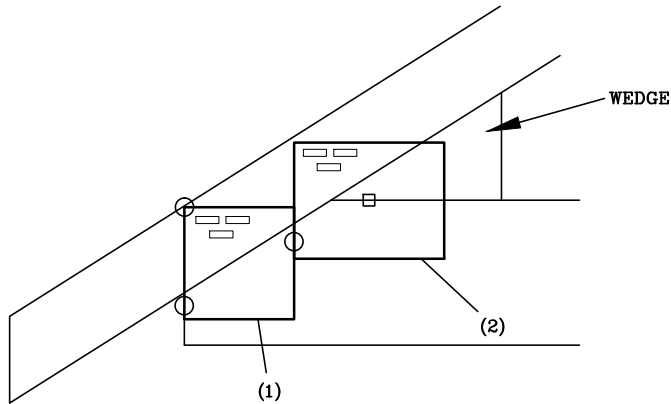
C7

- (1) PLATE CORNER HELD AT TOP OF TOP CHORD AND FLUSH WITH END OF BOTTOM CHORD.
- (2) PLATE CENTERED VERTICALLY ON SCARF AND HELD FLUSH WITH PLATE (1).



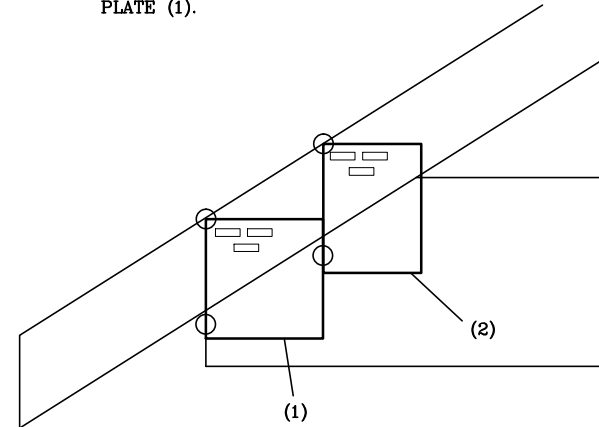
C8

- (1) PLATE CORNER HELD AT TOP OF TOP CHORD AND FLUSH WITH END OF BOTTOM CHORD.
- (2) PLATE CENTERD VERTICALLY AT TOP EDGE OF BOTTOM CHORD AND HELD FLUSH WITH PLATE (1).



C9

- (1) PLATE CORNER HELD AT TOP OF TOP CHORD AND FLUSH WITH END OF BOTTOM CHORD.
- (2) PLATE CORNER HELD AT TOP OF TOP CHORD AND HELD FLUSH WITH PLATE (1).



- NOTES:
 WEDGE/SLIDER MAY BE REQUIRED AS SPECIFIED ON SEALED DESIGN.
 ○ LOCATES PLATE CORNER OR FLUSH EDGE.
 □ LOCATES PLATE CENTER.



155 Harlem Ave
 North Building, 4th Floor
 Glenview, IL 60025

NON-STANDARD HEEL

160
C

C6 THROUGH C9

DATE 10/01/14