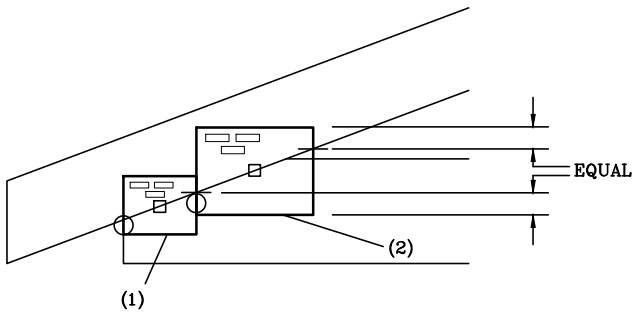


HEEL JOINT PLATE LOCATION DETAILS

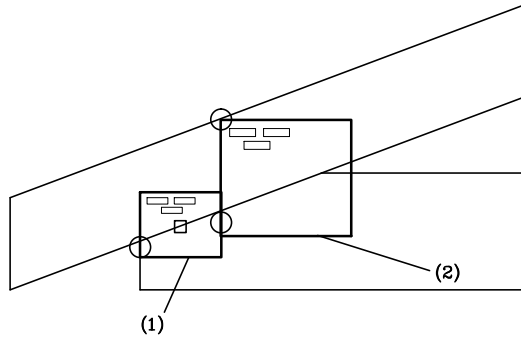
C1

- (1) PLATE CENTERED VERTICALLY ON SCARF AND HELD FLUSH WITH END OF BOTTOM CHORD.
- (2) PLATE CENTERED VERTICALLY ON SCARF AND HELD FLUSH WITH PLATE (1).



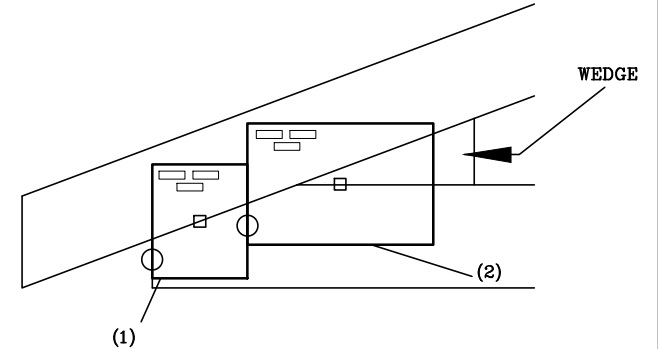
C2

- (1) PLATE CENTERED VERTICALLY ON SCARF AND HELD FLUSH WITH END OF BOTTOM CHORD.
- (2) PLATE CORNER HELD AT TOP OF TOP CHORD AND FLUSH WITH PLATE (1).



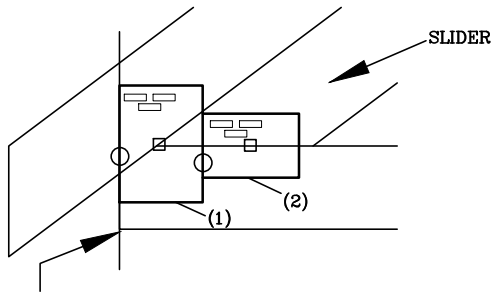
C3

- (1) PLATE CENTERED VERTICALLY ON SCARF AND HELD FLUSH WITH END OF BOTTOM CHORD.
- (2) PLATE CENTERED VERTICALLY ON TOP EDGE OF BOTTOM CHORD AND HELD FLUSH WITH PLATE (1).



C4

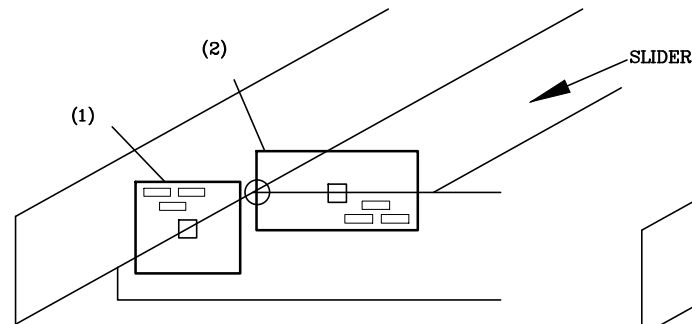
- (1) PLATE CENTERED VERTICALLY ON TOP EDGE OF BOTTOM CHORD AND HELD FLUSH WITH END OF BOTTOM CHORD.
- (2) PLATE CENTERED VERTICALLY ON TOP EDGE OF BOTTOM CHORD AND HELD FLUSH WITH PLATE (1).



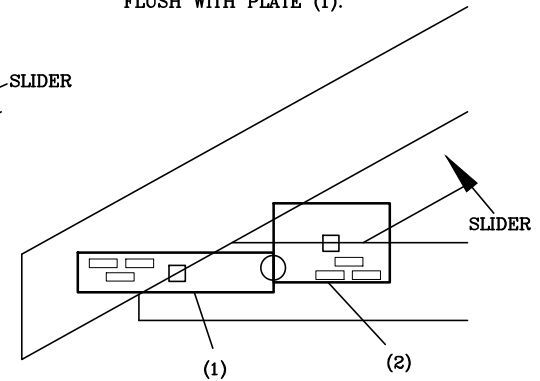
(1) FLUSH WITH ACTUAL OR VERTICALLY PROJECTED END OF BOTTOM CHORD.

C5

- (1) PLATE CENTERED VERTICALLY AND HORIZONTALLY ON SCARF. (SEE A1)



- (2) PLATE CENTERED VERTICALLY ON TOP EDGE OF BOTTOM CHORD AND HELD AT INSIDE CORNER OF SCARF CUT, OR FLUSH WITH PLATE (1).



NOTES:
 WEDGE/SLIDER MAY BE REQUIRED AS SPECIFIED ON SEALED DESIGN.
 ○ LOCATES PLATE CORNER OR FLUSH EDGE.
 □ LOCATES PLATE CENTER.



155 Harlem Ave
 North Building, 4th Floor
 Glenview, IL 60025

NON-STANDARD HEEL

160
 C

C1 THROUGH C5

DATE 10/01/14