

Alpine® SpeedSet Automation & Retrofit

Optimize your truss assembly & table productivity.



SpeedSet Retrofit



New SpeedSet

Optimization for truss assembly productivity.

The new SpeedSet automation is a state of the art truss assembly system that maximizes efficiency when building trusses. It utilizes all new Alpine® software with productivity enhancing features, including SmartView.

SmartView is an interactive, overhead viewing system that can speed up truss production table assembly by providing on-demand dimensions for build verification, zoom functionality, and member and plate information.

With the latest software and productivity enhancing features, the SpeedSet Retrofit upgrades an older Alpine® non-automated table to a modern, computerized jigging system.

Results Driven

Efficient

An automated jigging system improves truss assembly through rapid computer-controlled setups.

Adaptable

Software is easy to learn and simple to use. Enriched graphics are easy to view with simple adjustments.

Comprehensive

View the truss on screen, with plate information, lumber size, and dimensions.

EQUIPMENT SPECIFICATIONS

RETROFIT SYSTEM

Axis Travel Length	13-00-04' (with every other puck offset)
Puck Spacing	44" OC, 29.33" OC, or ~17" OC
Puck Speed	<60 sec. for full-length movement
Input Voltage	208-240V AC, 3Ø, 60HZ (specified by user)
Input Current	Varies per system
Air Requirement	Utilizes existing lift-out air supply
Operating Temperature	32° F to 104° F

NEW SPEEDSET GANTRY TABLE SYSTEM

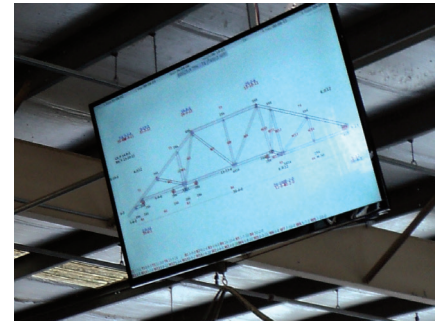
Axis Travel Length	13-00-04' (with every other puck offset)
Puck Spacing	24" OC
Puck Speed	<60 sec. for full-length movement
Input Voltage	208-240V AC, 3Ø, 60HZ (specified by user)
Input Current	Varies per system
Air Requirement	Utilizes existing lift-out air supply
Operating Temperature	32° F to 104° F

TABLES

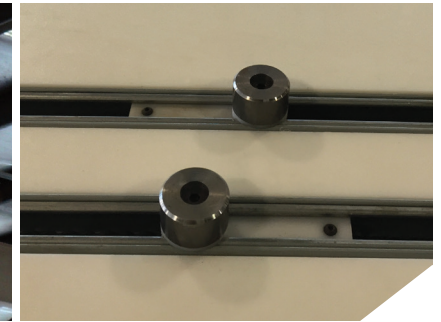
Mechanical	Steel frames with plastic table tops Dimensions: 8' x 14' standard - 8' x 12' and 8' x 16' available Side or end eject SpeedSet Automation - chain drive system Customer specified puck spacing - 24" standard
Electrical	Input voltage: 208-240V AC, 3Ø, 60HZ

GANTRY

Mechanical	High torque speed: 120 FPM High travel speed: 160 FPM Weight: 8500 lbs. Heavy duty steel roll 24" diameter, 7/8" wall thickness
Electrical	Horsepower: 20 HP Voltage: 460V 60HZ
Safety	Safety scanner emergency stop E-stop with interlock



SmartView Screen



Dual Pucks

FEATURES

- Dual puck unit with four spacing options
- Computer station with control and SmartView software
- New plastic table tops
- Plastic protector pieces reduce puck wear
- Reliable chain-driven system
- Self-cleaning channels
- Can add bridges to the Retrofit to make the system a solid top table system, if required
- New plastic top provides the ability to add blocking

