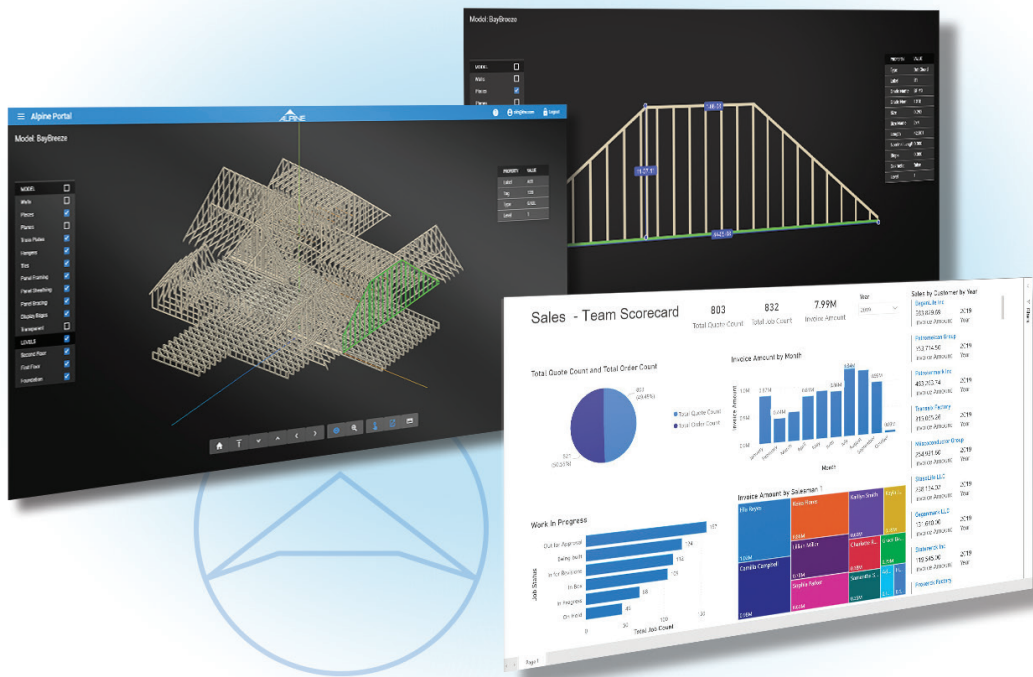


Alpine® Portal

Simple, secure and collaborative.



Analyze, Visualize & Collaborate

Share 3D Model

Align expectations with customers by quickly sharing the 3D model with an email address.

Improve Bid Package

Gain a competitive edge during bidding by offering free 3D model sharing to builders.

Track KPIs

Create KPIs and track them from anywhere in the world with real-time data.

Create Team Scorecards

Keep your team members aligned with easily accessible function-specific dashboards.

Unprecedented ability to analyze and share data.

The Alpine Portal provides Component Manufacturers the unprecedented ability to analyze and share data. Improve communication with your customers and reduce the need for last-minute design changes with the ability to publish interactive 3D models to the web. The Portal provides you complete control over file organization and user access with a customized file management system.

The Alpine Portal can be accessed using an internet browser, eliminating the need to install additional applications. The Portal also offers a complete set of business analytics tools to help you visualize relevant trends, track KPIs, and access your Alpine data from anywhere in the world. Leveraging Microsoft's cutting edge PowerBI technology, you can view your data in a way that is meaningful and actionable.



A simple, secure, and innovative tool to provide CMs better access to their data.

Improve Collaboration & Communication with 3D Models

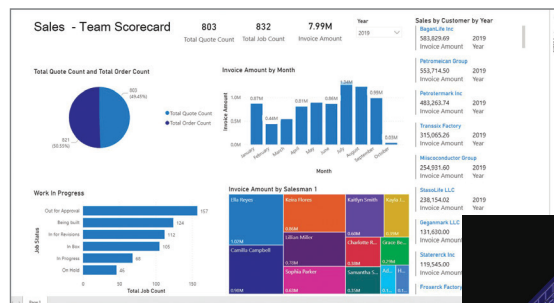
Publish 3D models from the IntelliVIEW® Suite to the Alpine Portal and share them with any customer email address. Keep models organized in a customizable folder structure in the Alpine Portal. Collaborate with builders, architects, sales, estimators, and homeowners to effectively resolve any potential issues. View 3D models in the Alpine Portal web browser and toggle visibility of elements, view individual trusses, and snap 3D dimensions as needed.

Customizable Dashboard & Analytics for Your Business

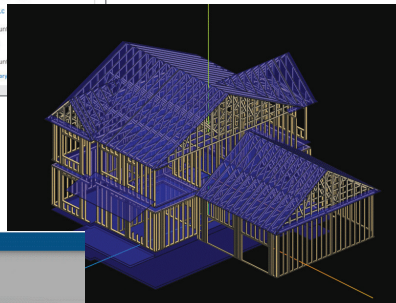
Alpine Portal's analytics supports over 30 different visualization types. Customize displays using values from an extensive list of data points and filter information to display only what is relevant to your business. View all your data from sales, design and production in one place. Manage your monthly sales, designer output, and production capacity at a glance to help identify areas of improvement.

Real-Time Data & Achieve Your Goals

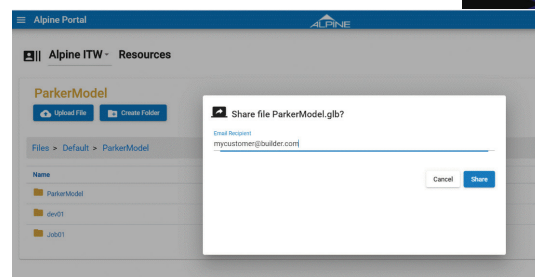
Access your data in real-time from any device. As new data is generated by day-to-day CM activity, Alpine Portal reads and displays the regularly refreshed data.



Interactive analytics dashboard



Alpine Portal 3D viewer



Share 3D model with any email address

FEATURES

Manage access to your files. Share individual files or an entire folder with customers. Remove access to any file or folder at any time.

Share more than just 3D models. Alpine Portal supports uploading and sharing of other job files, including PDF, DWG, JPG, and ZIP files.

Provide customer access to layouts, 2D drawings, quotes, and more.

"Favorite" frequently used dashboards for efficient one-click viewing.

Provide dashboard access to others. Keep team members aligned with access to important KPIs and dashboards. Portal users can view data analytics from a browser anywhere in the world.

Alpine Portal uses role-based security. Each user is assigned one of three roles with different permissions to create new users, generate content, and share: Administrator, Owner, or User.

Please contact your Alpine® Sales Representative for a demo or more information.