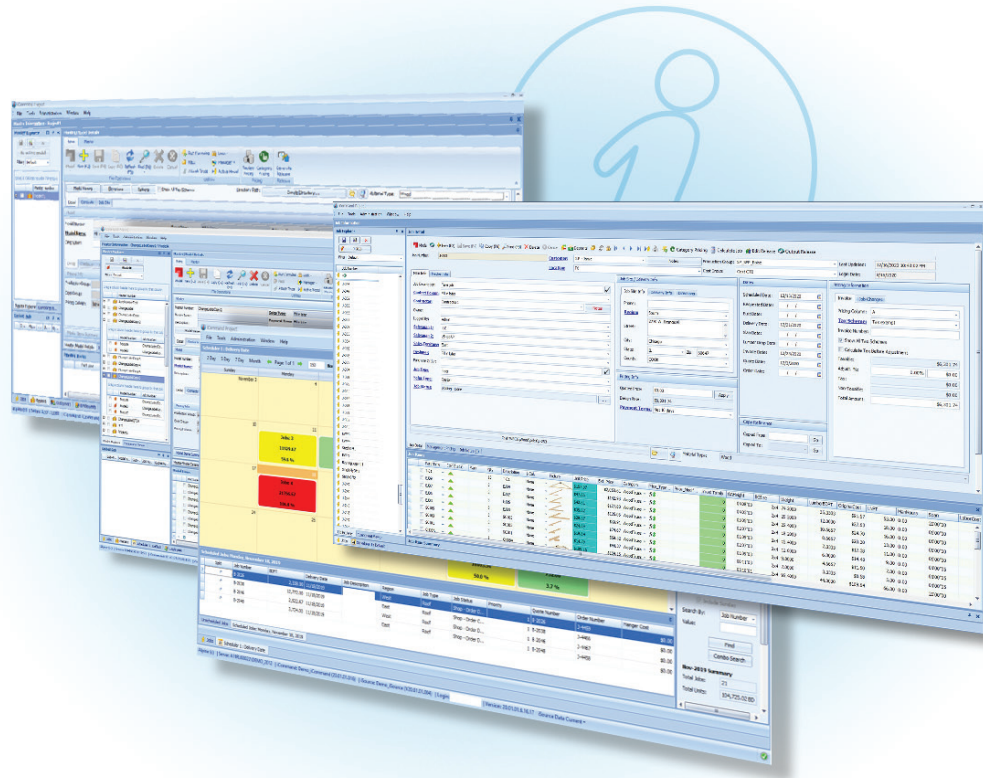


iCommand®

Your management hub.



Design, build, and manage easily from one workspace.

IntelliVIEW Suite's management hub, iCommand®, centralizes your project and job information so you can easily manage a project's rough framing elements from quote to delivery, including roof and floor trusses, wall panels, solid sawn, Engineered Wood Products (EWP), construction hardware, sheathing, and more.

iCommand connects all your business, design, and production information for any project regardless of style or size, in one workspace. iCommand Project handles the Model, Elevations, and Options from a Master Project Structure.

Your workflow, your way. With an easy-to-use configurable workspace, iCommand lets you customize your workflows and user experience to support your business from initial quotes, orders, project and job costing, scheduling to-do lists, reporting, and invoicing. It also carries through the design stage (including truss layout), engineering, panel framing, production, and delivery tracking.

What's New in Version 20.02

Connection to Alpine® Portal

Access critical business data from any internet browser, from anywhere in the world, by connecting iCommand to the Alpine Portal.

iCommand Project

Manage Models, Elevations, and Options from a Master Project Structure. Share trusses across models and update them efficiently.



Gauge lead time, profitability, and efficiency in every step of your workflow.

Manage Your Business Workflow Efficiently from One Location

Connect your business, design, and manufacturing information into one customizable workspace to help your company run smoothly. No need to use external software or tracking methods.

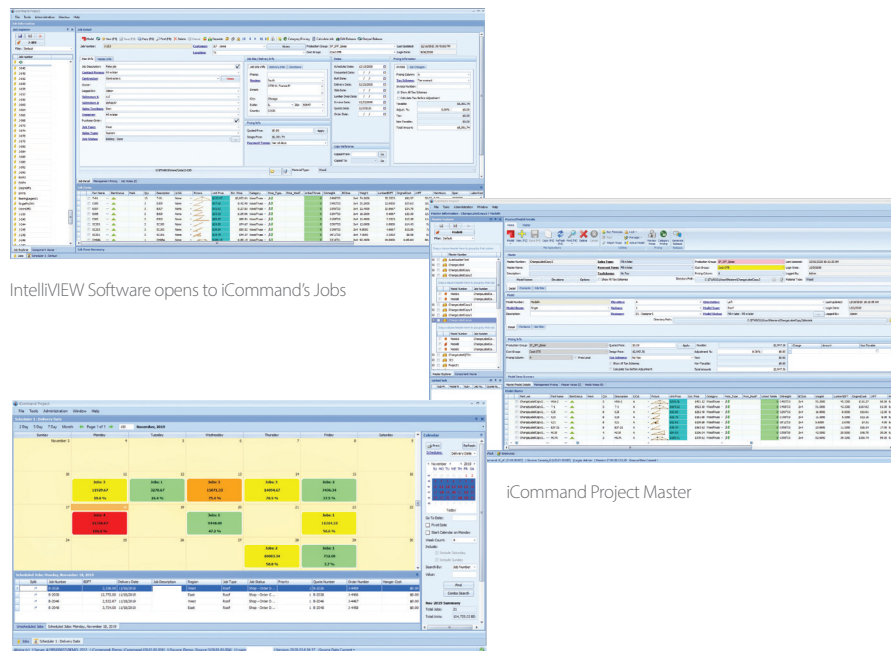
Customize the Application to Suit Your Needs

Customizable workflow adapts to the specific needs of your business, including key dates, job statuses, and pricing methods. This allows you to operate your business your way while tracking relevant information easily.

iCommand Fully Integrates with the IntelliVIEW® Suite

All the data is kept up to date automatically, which eliminates extra time to refresh or import/export data and reduces the frequency of errors.

iCommand's design supports your people, data, and workflow on your projects from quote to delivery – your way.



IntelliVIEW Software opens to iCommand's Jobs

iCommand Project Master

iCommand's Scheduler

FEATURES

Accurate, real-time information allows you to design, build, and manage your business with accurate real-time information from IntelliVIEW's iDesign, iModel, iPanel, eShop, and more.

An established SQL database offers an enterprise data synchronization so you can share information with accounting software packages.

Configurable workspaces let you customize windows, required fields, tab order, date defaults, field synchronization, and hotkeys.

Schedule any projects and jobs with ease. Check dependencies, e.g., production schedule against design schedule.

Accurate reporting delivers the information you need to run your business: material forecast, customer sales volume, designer productivity, as well as invoice and shipping tickets.

Assign a Pricing Category to each Customer. Hold price on items or categories when adjusting at a higher level. Save, manage, and re-run engineered trusses to Price Books for non-designer use.

iSource is the inventory management system that keeps you on target.

Quote to order tracking helps maintain individual quotes, orders, and the actual cost to quoted price break downs.

Get instant access to trusted directions with Google Directions. Autofill an address by zip code, city, county, and state.

Powerful search and find capabilities track down the most critical data at any time.

Define data unique to your company with custom fields with formulas in job, item, and customer windows.

Please contact your Alpine® Sales Representative for a demo or more information.