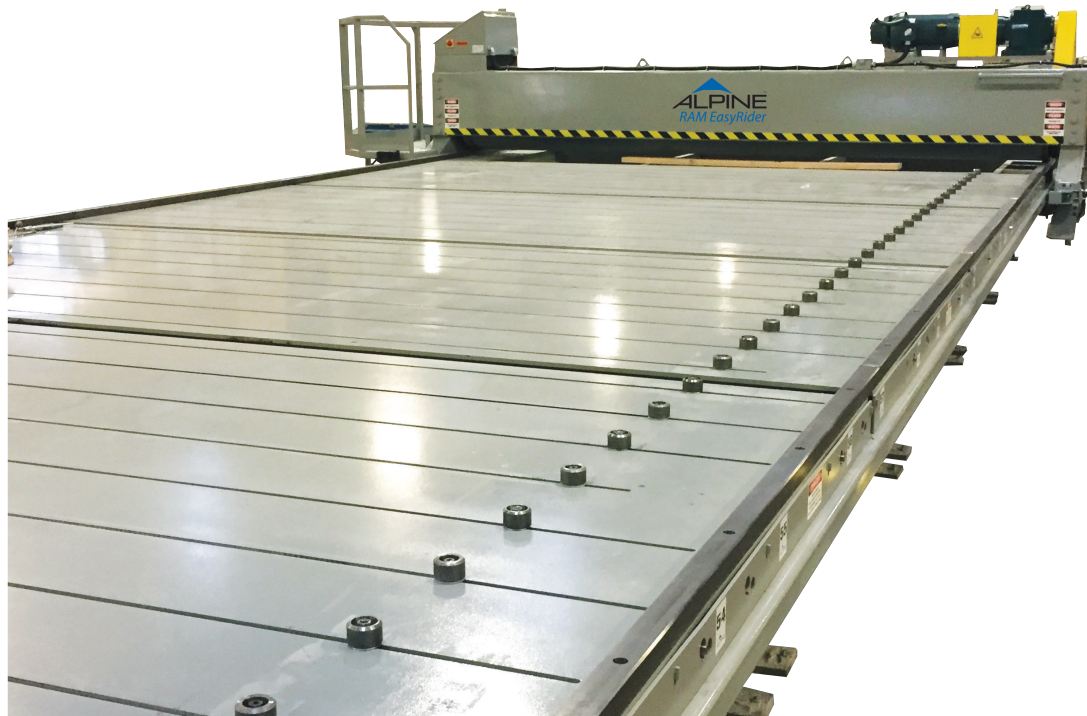


Alpine® AutoSet Plus

Truss table automation that helps you work smarter – not harder.



Precision on repeat.

Alpine's AutoSet Plus is the latest product in the company's history of innovative truss table automation. With the latest technology, the AutoSet Plus offers efficient and precise truss table automation to enhance our customer's productivity.

This computer-controlled jigging system is engineered to be set up in less than 25 seconds. The automated steel pucks give workers the ability to keep a consistent pace throughout their shift, with higher accuracy and reduced employee fatigue.

Results Driven

Reliability

Engineered to be accurate, efficient, and durable.

Quality

Fast, consistent production with reduced labor costs and quick turnarounds.

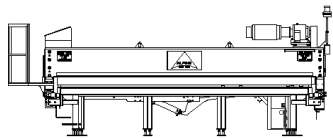
Intuitive

Easy to learn, use, and maintain.

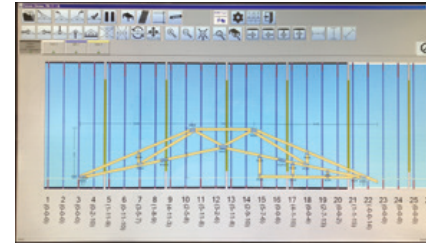
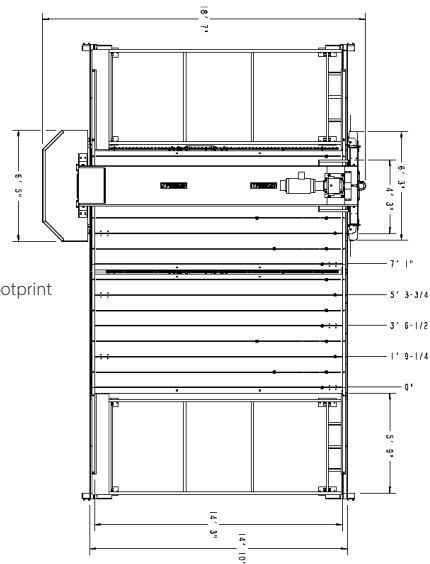
EQUIPMENT SPECIFICATIONS

Standard Footprint	18'-7" x Customer Specific x 7'-6" (W x L x H)
Gantry Roller Face Width	14' 7"
Gantry Overall Width	18' 7"
Gantry Travel Speed	140 in. / min.
Table Length (per table)	7' 1"
Table Width (between rails)	14' 3"
Maximum distance between top and bottom automated pucks	12' 6"
Truss Jigging Setups / Groups	1 to 4 groups per system
Air Requirement	2 CFM per liftout at 100 Psi (when activated, not a constant draw)
Operating Temperature	32° F to 104° F
Amperage Requirements	480V AC 3PH (customer must provide transformer if other than 480V AC 3PH) - 25 Amp per Gantry - 15 Amp for the Controller Box - 20 Amp per 16 Automated Axis
Foundation Requirement	≥6" thick reinforced concrete

4 automated puck table configuration



Standard footprint



On-screen directional prompts



The entire working surface can be used for jigging and pressing

FEATURES

- Computer-controlled system: Features on-screen graphics, directional prompts, and advanced diagnostics
- Superior quality jigging system: Durable steel top with quick setup time and precision laser cut table-top
- Compatibility: SmartView and Windows 10 compatible
- Horn & light signal: To alert the assemblers when a group of lift-outs is about to operate
- Lift-out detection: Avoids being hit with the gantry
- Tri-lingual interface: Operators can run the table in English, Spanish, or French

TABLE CONFIGURATIONS

- 4 automated pucks, 4 manual pucks, 7 baselines
- 8 automated pucks, 7 baselines

OPTIONS

- Additional computer stations
- SmartView
- Additional gantry heads