

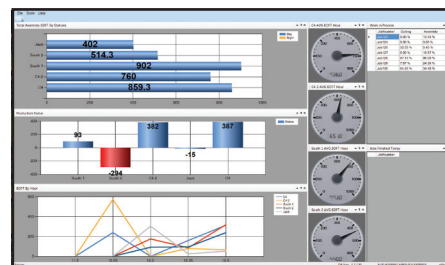
Interactive Scheduler

Gain better control of your staff, material and production costs with eShop software. eShop interfaces with a variety of equipment, and easily adapts to the machinery from most manufacturers and vendors.

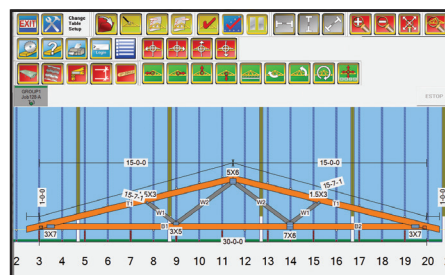
Use eShop to manage your plant more efficiently and:

- Track production in real time;
- Gain insight into your production data through intuitive reports;
- Quickly redirect workload between machines and monitor crew efficiency;
- Instantly dispatch rebuild and rush jobs to automated and manual saws;
- Provide table crews with complete on-screen job information, truss jig measuring tools and re-cut requests;
- Easily adjust schedules and enhance the accuracy of predicted costs;
- Easily integrates with iCommand and Homebase; Automatic job status updates, date changes and exchange production data. No import / export required.

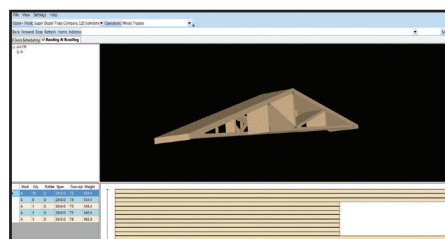
Streamline your shop's production by contacting us today to schedule an eShop demonstration.



Plant Dashboard



Truss Table / Banding



Features

- Productivity tracker
- Production estimation
- At-a-glance job reporting
- Simplified adjustments and re-cuts
- Interactive scheduling
- Equipment interfaces
- Inventory and staff analysis
- Accounting software integration

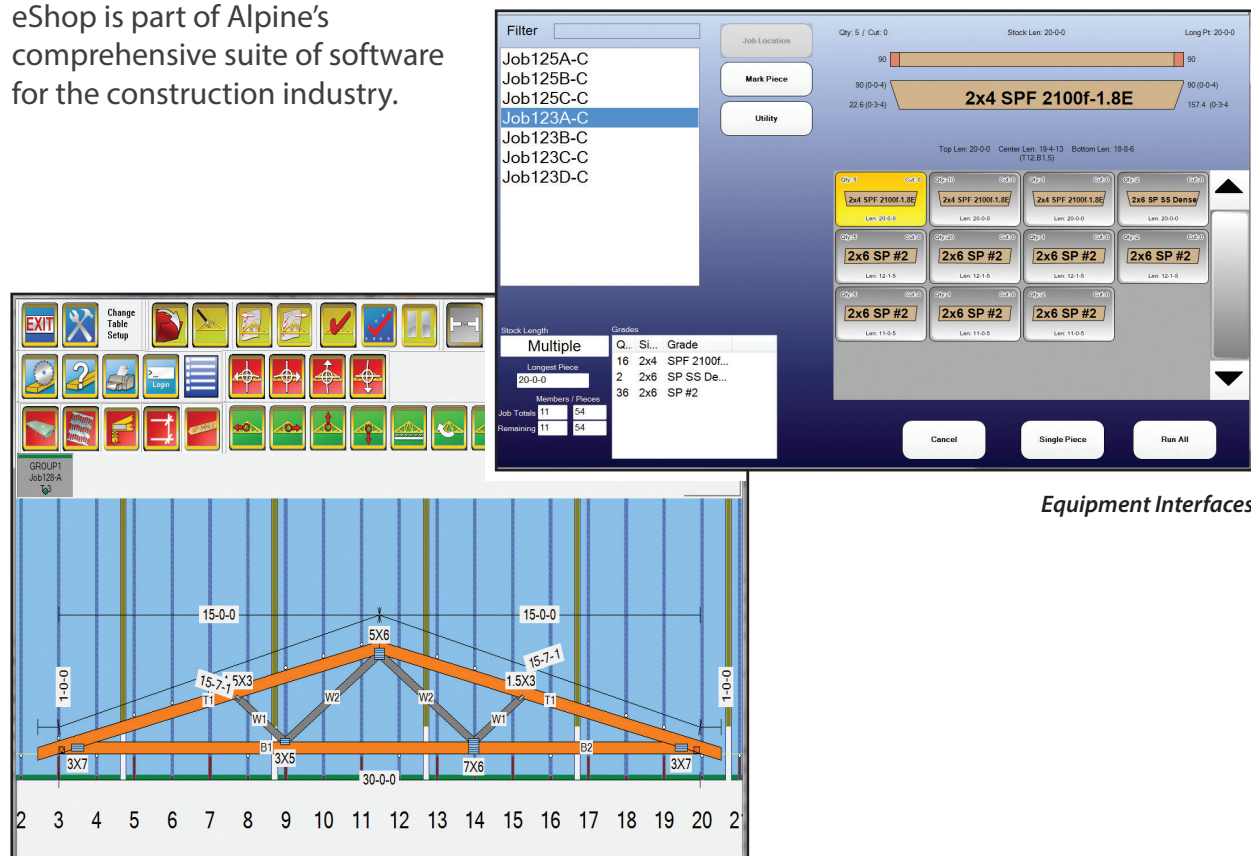


eShop

eShop, the industry's leading truss plant connectivity software, gives you better control of people, material, production and costs. It's been conceived, designed and tested by component industry professionals who understand your business and its unique challenges. As a result, eShop works the way you do, and doesn't impose new procedures on your plant or your people that could affect productivity.

eShop integrates with a variety of machinery, and can easily be adapted to equipment from most manufacturers and vendors. Customized solutions allows integration with a variety of software platforms, including ERP systems, accounting packages and time keeping software. It's database is SQL-based and easily generates reports in conjunction with Microsoft Access or other database managers.

eShop is part of Alpine's comprehensive suite of software for the construction industry.



Equipment Interfaces

End-to-End Management