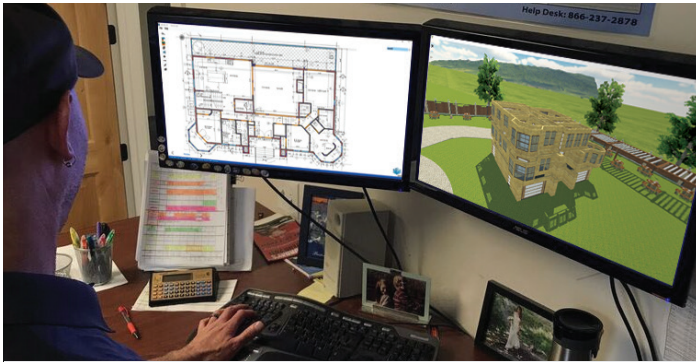




Prep time for truss job bids cut in half... or even more!

Connecting for the Future

Alpine's STITCHER software delivers significant savings for APEX Technology's bidding and design tasks



APEX Technology agreed to participate in a trial and evaluation of Alpine's STITCHER software. Ryan Deeb, an APEX employee who has become familiar with this software, was interviewed for this report and Duncan Frost, Senior Product Manager at Alpine and Alpine's STITCHER product owner, provided technical perspectives.

Ryan Deeb works in the True House division of APEX and has been in the industry for seven years. He has a degree in Design and Drafting and started his professional career as a Level 1 Designer first assigned to very basic homes. He now handles more complex projects—multi-family homes, custom homes, hotels, mostly multi-level projects. As Ryan puts it, "Whatever they throw at me, I can do."

As the point-man for the STITCHER introduction, Ryan has had regular contact with Alpine's Duncan Frost and is very familiar with the current and evolving features and benefits of this unique software tool. For now, APEX uses the software strictly on truss projects. Ryan provided his unbiased views on the impact STITCHER has had to date.

The Product

STITCHER is a unique software tool developed by Alpine to free component estimators and designers from repetitive tasks and to speed both bidding and production phases of projects. Integral functions identify and compare related visual components and automatically correct drawing discrepancies for improved accuracy. STITCHER also incorporates time-saving features for repeating approved detail elements and adding late-stage options when required.

Speed

STITCHER's speed and efficiency delivers accurate bids quickly, without cutting corners that might lead to errors. Ryan's major focus is preparing project estimates. He explains, "For me, right now, it's about getting bids processed and out."

For bid designs, Ryan believes that STITCHER saves 1-1/2 to 2 hours per assignment because it auto-populates the design and, as he said, "I don't have to spend hours putting in walls."

Ryan appreciates the continuing software developments and, looking forward to future applications, commented, "I'm familiar with the capabilities for automatically integrating details and options. This is another big STITCHER time-saver." Overall, he declared, "For bid purposes, the process is much faster with STITCHER."

Asked if STITCHER helped increase the number of bids produced, he emphatically said, "Absolutely! It cut the job time in half with quicker inputting meaning quicker to bid."

Accuracy & Versatility

STITCHER is designed to be as accurate if not more accurate than an experienced designer. One example: STITCHER grabs and places 6-inch plumbing walls automatically to avoid simple layout mistakes that would impact component design and production. The software compares views and levels to identify discrepancies before they become tangible.

As Ryan stated, “For wall dimensions, STITCHER has been spot on. I didn’t have to change anything.” He reinforced a simple truth, “Walls need to be accurate to be sure that trusses are accurate. STITCHER delivers accuracy.”

Learning to Use STITCHER

Ryan’s practical introduction to STITCHER was straight-forward and rapid: after one hour of training plus one hour of Q&A he was ready to use the new tool.

“There was a little learning curve at first because commands were different from prior operations, but the learning curve was short. Commands took only two hours to learn; the interface is easy.”

Application & Confidence

When asked for an example of STITCHER’s impact on his efficiency, Ryan reflected, “Marcus Allen home projects are generally complex. They have lots of walls and are very large. Some dimensions are hidden or are hard to find with overlapping data. With STITCHER I can define walls easily and bring them into the plan. I estimate that with STITCHER I’ve saved at least 1 to 2 hours putting in walls. Marcus Allen designs have quite a few different ceiling heights (they’re pretty good-sized homes) so STITCHER really shows its value. With more complex jobs STITCHER really shines.”

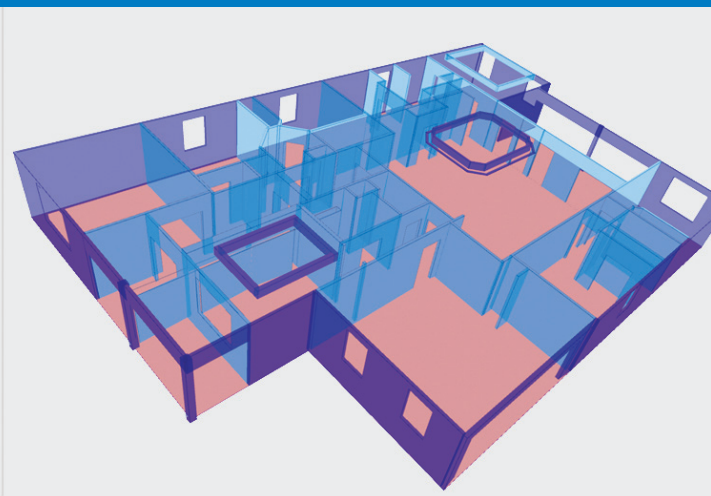
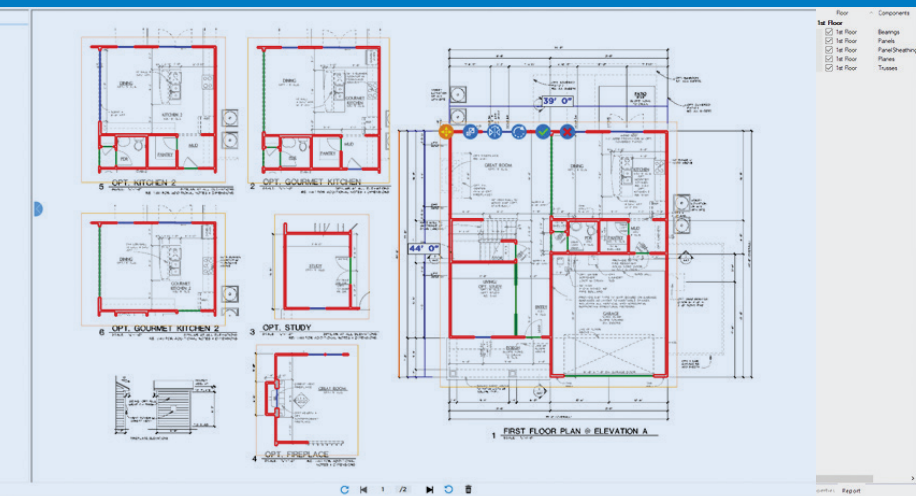
Regarding his ability to rely more and more on STITCHER, Ryan was clear, “I usually double-check myself so I’m pretty confident in what I do. There have been a few cases with angular wall issues and where dimensions weren’t provided and that’s where STITCHER helps and that’s where I’m most comfortable.”

Ryan Deeb works for the True House division of APEX Technology in Jacksonville, Florida—an experienced company with over 30-years in the industry. Ryan has degrees in Design and Drafting and provides estimating and design services.

“With more complex jobs STITCHER really shines ... I don’t have to spend hours putting in walls.”

— Ryan Deeb
True House division,
APEX Technology





Alpine Support

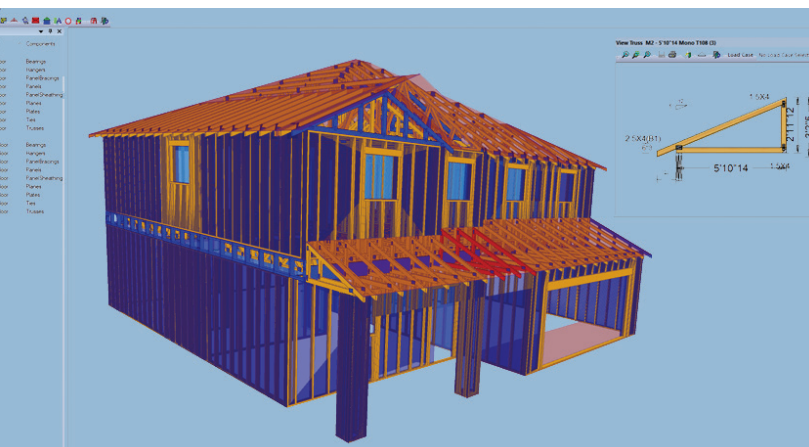
Duncan and his team appreciate the valuable testing and reporting from APEX and Ryan and were quick to answer any questions or comments during the trial period. Ryan confirms the cooperation, "Alpine is always there to help. I get good responses to any requests."

When asked if Alpine treated APEX like a partner during the development, Ryan was quick to reply, "Absolutely!"

Future

"I'm looking forward to the new features that are coming along, some of which we've previewed. Roof planes will be a big help; split wall heights will be a big help," added Ryan.

The final word: STITCHER makes a good designer even better.



STITCHER™

BUSINESS & DESIGN SOFTWARE | CONNECTOR PLATES
EQUIPMENT | ENGINEERING SERVICES & SUPPORT

As your partner, Alpine provides you with tools that utilize the latest technologies to make your team efficient.

Add STITCHER to IntelliVIEW and realize savings in labor, increased accuracy in bidding, increased confidence in designs and faster response to customers.

Ask those who know. They'll tell you about the people at Alpine who make a difference.



Connecting for the Future

Call 800-521-9790 or visit www.alpineitw.com for complete information