



Get more Quality, Flexibility and Labor Savings using

WALL PANELS



ALPINE[®]
AN ITW COMPANY

Get more Quality, Flexibility and Labor Savings using
WALL PANELS

Builders want solutions that help them stay on schedule and maintain quality construction and profits. When compared to traditional frame construction, manufactured wall panels are better, stronger, and can be installed faster. A wall panel is an engineered structural component assembled from wood members.

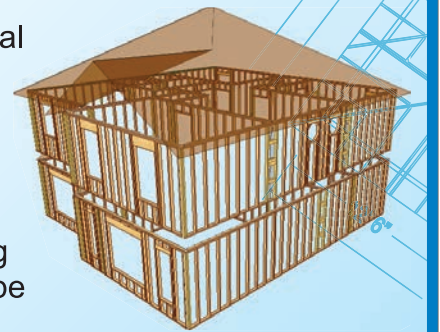
Like other engineered wood products, wall panels save you time, money, and guesswork. All wall panels are developed by skilled technicians using sophisticated computer modeling software. The result is building components precision fitted to exact job specifications. You'll receive a layout for a complete wall system with framed-in openings for windows, doors, and headers, exactly as detailed on the plans.



The component manufacturing process is simple and offers the professional builder plenty of time- and cost-saving resources along the way.

Here's how it works:

The building designer determines what loads need to be supported within the home. House plans are sent by the builder to the component manufacturer. There are hundreds of manufacturers operating nationwide, but builders should research the quality and delivery costs before choosing a vendor. Then the component designer determines the panels that will be required, and their specific placement in the home. The manufacturer then builds the component, labels them for accurate installation, and ships them to the builder on the job site.



A detailed diagram with the placements of the panels is sent along with the shipment to help the builder place the components exactly where they should be installed. Once the wall panels are on the site, the builder can really start to see the benefits. These benefits will reduce the amount of time trade contractors spend on site, speed up construction, and ultimately save the builder money. The technology used in the design and manufacturing of wall panels makes them a superior choice for builders looking to streamline construction and provide a higher quality home to their customers.

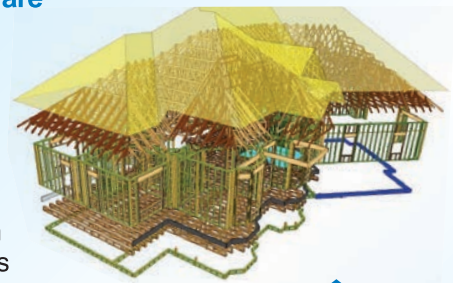


Get more Quality, Flexibility and Labor Savings using

WALL PANELS

Layout, Design and Engineering Software

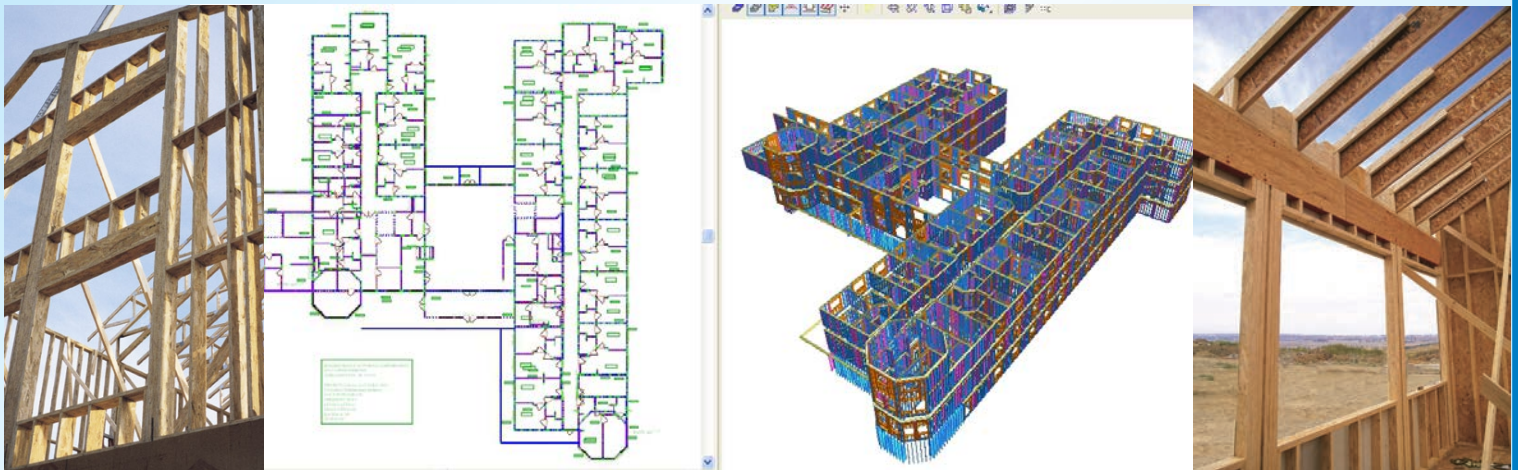
Powerful CAD-based design software from Alpine generates traditional plan view layouts, and 3-D graphics that give an accurate picture of a structure from virtually any perspective by showing every component in place. Work confidently with the industry's best fully integrated design solution. Our IntelliVIEW software reduces both designer time and aggravation, giving you more peace of mind with fewer mouse clicks.



ALPINE
IntelliVIEW

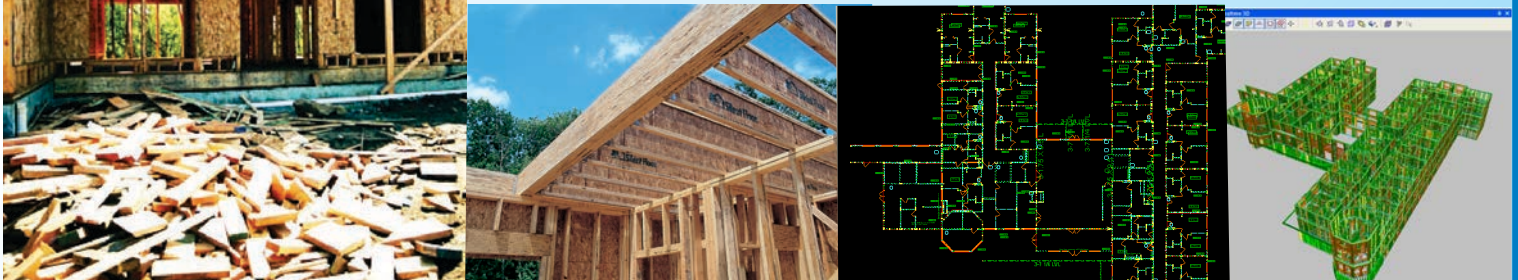
Wall Panels Save You Money

The dry-in time for a structure using wall panels is significantly shorter than stick framing. This saves money in construction costs. The simplicity of erecting a panelized structure allows for a less experienced construction crew, saving cost of labor and expensive mistakes from field decisions. Far less scrap is generated on a job-site using panelized walls.



Less Waste and Safe job sites

Because wall panels arrive as a complete system, you'll reduce waste from inaccurately cut lumber. Less waste results in lower cost of dumpster removal. Additionally, the amount of shrinkage, warping and twisting of the material due to weather conditions is greatly reduced. Panelization reduces the amount of lumber being cut on a job site. Thereby, reducing injuries resulting from cutting lumber.



Job Site Look Like This?

Get more Quality, Flexibility and Labor Savings using

WALL PANELS



You Can Save Time, Money and Build a Better Home

Wall panels are built in a controlled environment using precision laser technology to ensure consistent quality and fit. Because the wall panels arrive on site as a system, there are fewer construction delays, allowing you to complete more homes per year.



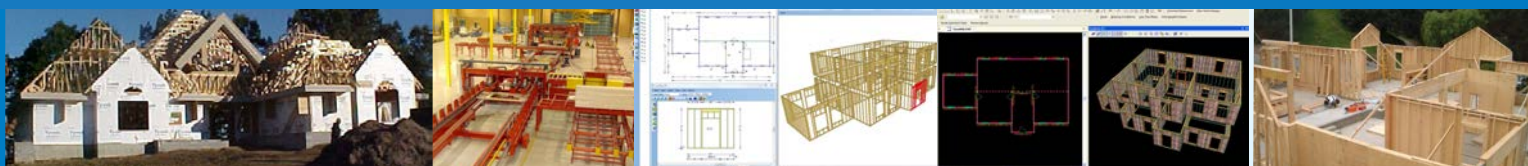
Wall Panels are
Environmentally
Compatible.

Get the Job Done Faster

When wall panels arrive on your job site, each one is labeled and accompanied by detailed instructions for set-up sequence and placement. This speeds up installation.

Reduce Your Labor Needs and Costs

Using wall panels means faster installation time. It also means you'll need fewer framers, which translates into more cost savings for you. You're able to maximize your team with only one crew leader. General contractors can also manage multiple job sites more efficiently. In addition, wall panels require less cutting and nailing so you can reduce the risk of job site injuries.



The innovative software, equipment, products and services available from Alpine, enables our customers to manufacture and sell the finest truss and wall components available in North America. Alpine offers component engineering services, design and management software, production equipment and truss connector plates. The pioneering concept developed for wood trusses was also applied to our revolutionary line of products and services for cold-formed steel components used in commercial applications. Alpine's software includes design and manufacturing programs that work together to quickly produce structural framing components. Our powerful CAD-based software generates highly accurate 3D layouts that show structural framing with every component in place from any perspective. iCommand, part of the IntelliView suite, enables truss manufacturers to manage business their way with unprecedented power and flexibility.

Alpine, an ITW Company is a division of Illinois Tool Works Inc. (NYSE: ITW), a Fortune 250 global multi-industrial manufacturing leader of value added consumables and specialty equipment with related service businesses. Founded in 1912, ITW's recipe for success has been consistent: value added products and outstanding service win the day with customers. ITW places a high premium on the development of highly engineered products and systems – most of which are developed in tandem with customers. And the company continues to ensure that customers receive timely, cost-effective service for the innovative products ITW provides. ITW's more than 50,000 dedicated colleagues around the world thrive in our decentralized, entrepreneurial culture. In 2017, the company achieved revenues of \$14.3 billion, with roughly half coming from outside North America. For more information, visit www.itw.com.



155 Harlem Avenue, North Building – 4th Floor
Glenview, Illinois 60025
800-521-9790 - www.alpineitw.com

09/12/2018 Version © Copyright 2018 - All Rights Reserved.
For more information please contact mfagan@alpineitw.com