



## SpeedSet Automation available on new Alpine table systems

*The smart choice to increase truss assembly productivity*

- **Boost Efficiency**
- **Reduce Labor**
- **Increase accuracy**
- **Raise profits**

All the benefits of SpeedSet puck automation are available on a new system. Alpine partnered with Square One Design and Manufacturing Inc. to bring you a state of the art truss assembly system that will maximize efficiency when building trusses. The SpeedSet automation utilizes all new Alpine software with productivity enhancing features including the SmartView overhead projection system. Square 1 provides the operator with controls mounted on the Clear View platform and a touch screen HMI to control the direction of the machine and the movement of the ejectors.





# Alpine SpeedSet Table System

The Alpine SpeedSet system includes:

- **8-foot tables with sloped liftouts and SpeedSet dual puck units**
- **Wood and plastic table surfaces**
- **SQ-1 Roof Truss Intelligent Gantry (Trackless)**
- **SmartView overhead viewing system**

The pucks are sold in pairs of two. One will be typically located at the bottom of the table, while its counterpart will locate at the top. When a new truss is selected the pucks automatically move to the correct location to build the profile. If the operator would like to move a puck location, adjustment is quick and easy.

- **Plastic wear piece reduces puck wear**
- **Reliable chain driven system**
- **Self-cleaning channels**
- **Minimal maintenance requirements**



Plastic Table Tops with 24" Puck Spacing

Dual Puck Units



## SmartView overhead viewing system

- **Quick access to information**
- **Reduction of paperwork**
- **Faster builds**

The SmartView system allows truss builders to view the truss on a screen or TV. The package provides the builder with all of the information that is typically found on a print in a large easy to view format. The builder can see plate information and location, lumber size and truss dimensions.

The package also includes the ability to zoom in on a location. It has the capability to snap from one feature to another and provides custom dimensions.

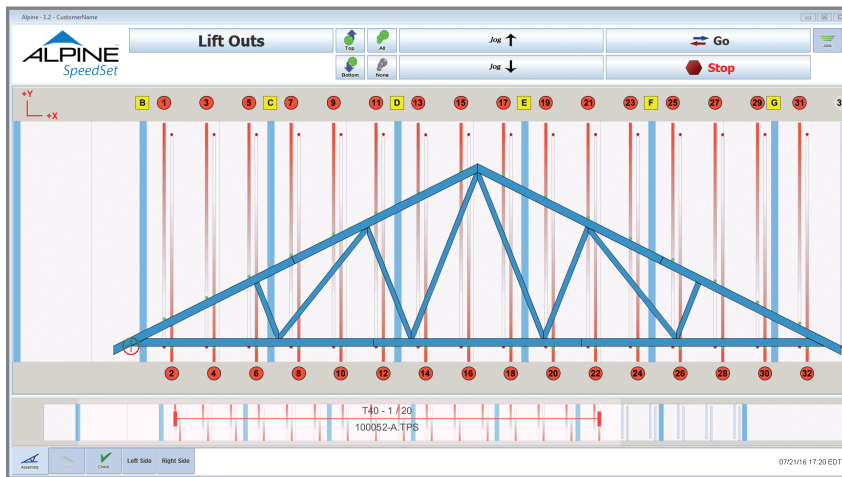
These features save time and movement, further increasing productivity.



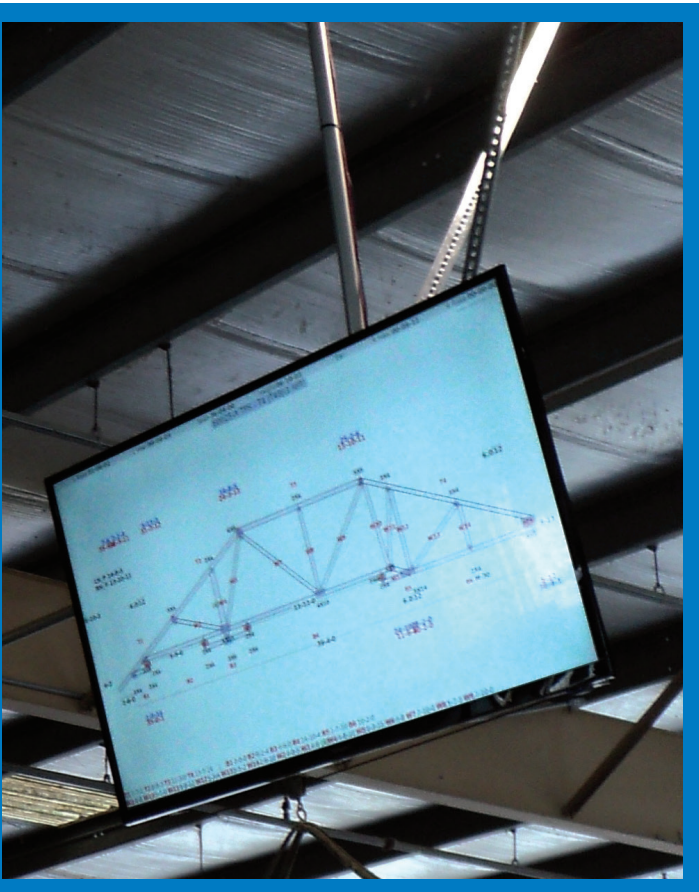
# Quick to learn, simple to use software

## Innovative Software Features

Our software is quick to learn and simple to use. The enriched graphics are easy to view in plant conditions and adjustments are simple. SpeedSet is eShop compatible.



- Intuitive buttons for most functions
- Snap locations move the truss on the table
- Snap will move pucks to more convenient locations
- Maintenance screen for diagnostics
- "Active Support" button connects to Tech Support



## SQ-1 Roof Truss Intelligent Gantry

- Infinite pneumatic ejector selections
- Operator defined ejector area
- Wireless remote operation
- Onscreen diagnostics
- Production metrics

# Alpine SpeedSet Table System

Increase your productivity  
and maximize your profit!



## Technical Specifications

<b>Operating temperature</b>	32°F to 104°F
------------------------------	---------------

Tables	
<b>Mechanical</b>	<ul style="list-style-type: none"><li>• Steel Frames with plastic table tops</li><li>• Table dimensions: 8'x14' standard<ul style="list-style-type: none"><li>◦ 8'x12' and 8' x 16' available</li></ul></li><li>• Side or end eject</li><li>• SpeedSet Automation – Chain drive system</li><li>• Customer specified puck spacing<ul style="list-style-type: none"><li>◦ 24" standard</li></ul></li></ul>
<b>Electrical</b>	<ul style="list-style-type: none"><li>• Input voltage: 208-240 V AC, 3Ø, 60 HZ</li></ul>

Gantry	
<b>Mechanical</b>	<ul style="list-style-type: none"><li>• High torque speed: 120 FPM</li><li>• High travel speed: 160 FPM</li><li>• Weight: 8500 lbs.</li><li>• Heavy duty Steel Roll 24" dia., 7/8" wall thickness</li></ul>
<b>Electrical</b>	<ul style="list-style-type: none"><li>• Horsepower: 20 HP</li><li>• Voltage: 460 V 60 HZ</li></ul>
<b>Safety</b>	<ul style="list-style-type: none"><li>• Safety scanner emergency stop</li><li>• E-stop with interlock</li></ul>

## Installation

Complete installation services provided by an Alpine recommended service provider.

## Warranty

One year limited warranty



155 Harlem Avenue  
North Building – 4th Floor  
Glenview, Illinois 60025  
800-521-9790  
alpineitw.com

**Call your Alpine  
sales representative  
and order yours today**