

# IntelliVIEW

## Manage. Design. Build.

The industry's most powerful integrated component design, engineering and management software for steel and wood-framed structures.

The IntelliVIEW suite is a fully integrated software solution for the layout and design of a building's rough framing elements including roof and floor trusses, wall panels, solid sawn, EWP, construction hardware, sheathing and various ancillaries.

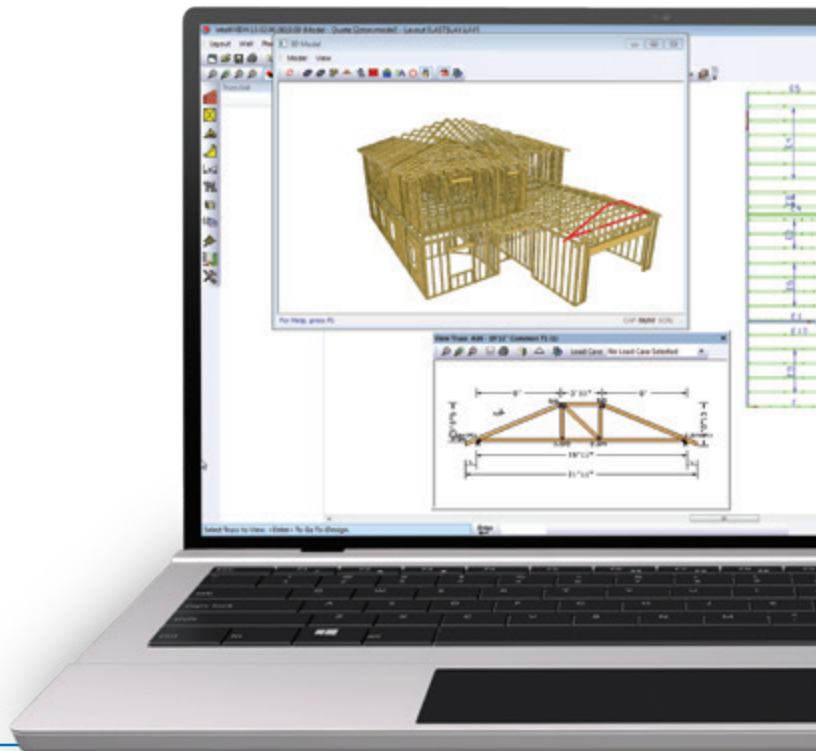
The IntelliVIEW suite provides the industry's most complete analysis of the design, cost information and bill of materials. The software promotes increased profits by reducing plate and lumber use.

Once the designs are optimized, they can be saved to the Component Catalog for use on future jobs. With the push of a button, the truss catalog can be searched for potential matches. The designer is presented with the potential match and must accept or reject it. When accepted, it automatically loads into the job, saving time and simplifying the workload.

Full integration means that changes can be made anywhere in the software suite and all occurrences will be updated in real time.

Alpine is known for its superior helpdesk and service. Combine this with the speed of design that can be obtained with IntelliVIEW's intuitive process and fully customizable database screens to increase efficiency and productivity in your shop.

- **iCommand**  
Manage projects, cutomers, materials and pricing
- **iModel**  
Design truss layouts and profiles
- **iPanel**  
Design wall layouts, panelize, bundle, break and stack
- **iDesign**  
Optimize material usage and engineer trusses
- **iSource**  
Manage use of materials inventory



IntelliVIEW's 19.02 software series builds upon Alpine's history of delivering best-in-class solutions for our customers.

**Here are some of the key features and benefits available in our latest release:**

Features Available in 19.02 – Q4		
Feature	Summary	Customer Value
<b>Supports STITCHER add on</b>	Automatic generation of digital building envelopes from 2D builder plans	STITCHER saves time, increases accuracy and escalates confidence in estimating and design work.
<b>Web -based 3D Viewer</b>	Share 3D models with end users	Avoid rework. Exchange critical information, collaborate with end users and identify potential conflicts prior to fabrication.
<b>Openings Manager</b>	Create sharable openings to use in different levels, wall sizes and wall conditions	Easily manage, edit and create openings. Panel designers can reduce time in the creation of windows, doors or multiple openings by up to 70%.
<b>Regeneration</b>	After using Trim, Extend, Offset or Stretch, all parts of a panel will update	Designers often modify designs based on builder requests. The designer can modify the length of the wall and not change the existing frame edits.
<b>Fabrication Manager</b>	Predefine rules for the creation of new openings  Create groups with all of the fabrication setting required for a specific customer	Eliminate errors by controlling centralized framing rules and settings for specific customers.

Features Available in 19.02 – Q4		
Feature	Summary	Customer Value
<b>Truss Retain Edits</b>	When a user modifies planes in iModel, changes to splicing and material grades are retained	Save time by eliminating the need to redo truss modifications when planes change.
<b>5 Plane CHIP</b>	The designer can select all trusses crossing a plane by selecting the plane and use the tools to configure the trusses	Saves time by allowing the designer to accurately control the framing in the 5 Plane HIP.
<b>Treated Lumber and Conditions</b>	110 available lumber treatment and condition combinations	More accurate costing available, with treated pieces specified within the truss.
<b>Component Catalog Refinements</b>	The component catalog has been enhanced to work across all elevation levels. Background engineering checks run automatically.	Expands the ability to re-use previously optimized components
<b>Single Cut Web Options</b>	Setting this option specifies single cut webs on flat trusses	Minimize production cuts for improved cutting efficiency and reduced blade wear.
<b>Floor Blocking Report</b>	Combine all similar blocks into one report, documenting length, how they are blocked and an image of the block	Improve production throughput by pre-building floor web blocks.

# IntelliVIEW

## Manage. Design. Build.

### Highlights

- Web-based 3D Viewer**

3D models can be shared for collaboration or to exchange critical information

- New Reporting Platform**

DevExpress provides a modern interface for report creation

- Redesigned Openings Manager**

iPanel solution that offers efficient and intuitive management of rough openings, openings libraries, and complex framing configurations

- Designer Efficiency Features**

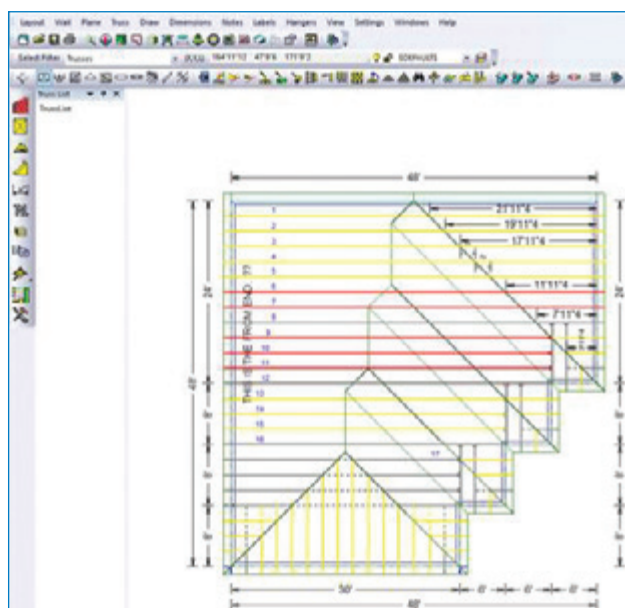
Support multi-plane hip framing configurations and enhanced truss retain edits functionality.

- Increased flexibility in Lumber Inventory Combinations**

Combination options are based on fire retardant treatment, moisture content, and options including finger-jointed and certified.

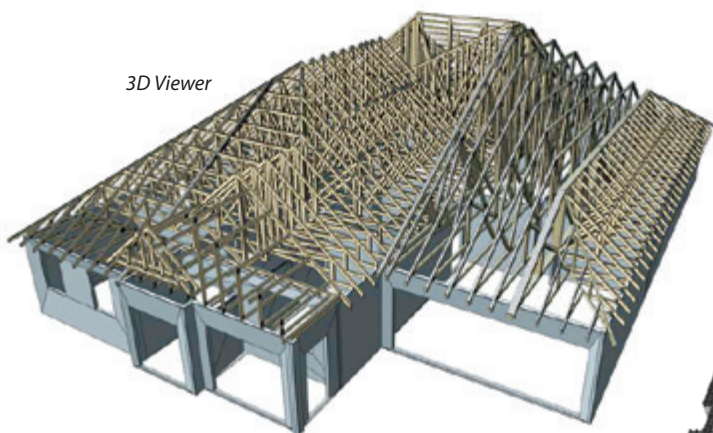


Openings Manager

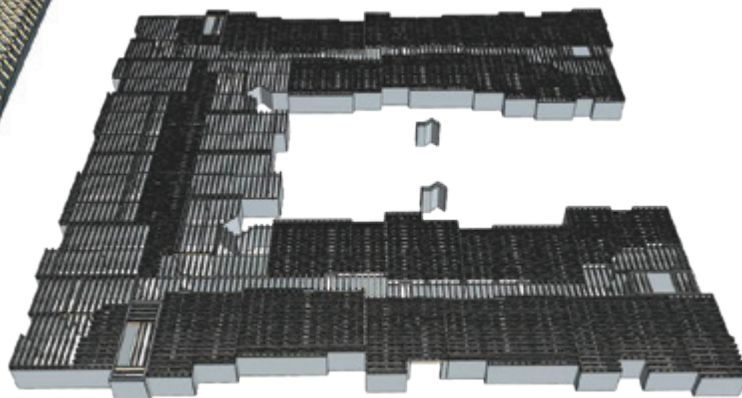


West Coast Framing

3D Viewer



Large Multi-Family Layout



155 Harlem Avenue  
 North Building – 4th Floor  
 Glenview, Illinois 60025  
 800-521-9790  
 alpineitw.com

For more information contact your local Alpine sales manager  
 or call **800 521 9790**