



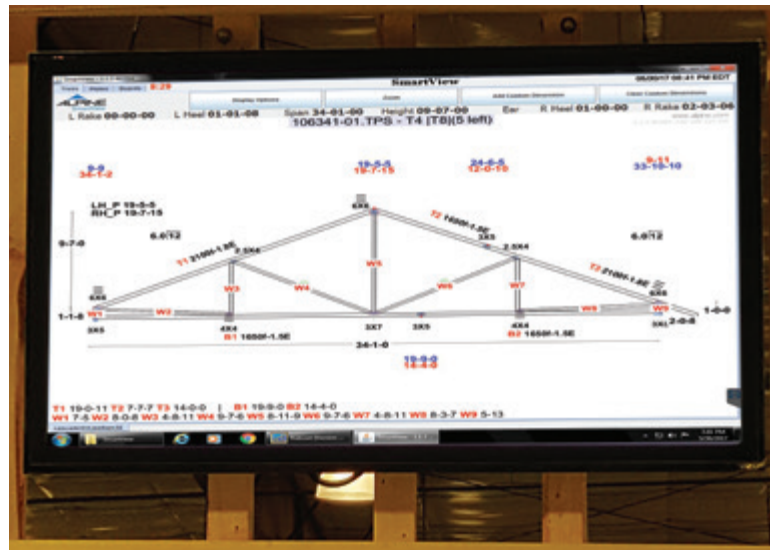
SmartView Truss Assembly Viewer

Viewing system to speed up assembly at the truss production table

SmartView is an overhead viewing system that will speed up assembly at the truss production table. It reduces the need for paper at the table, displaying everything the truss builder needs to build a truss on a highly visible screen above the work surface. SmartView makes use of color to identify information quickly in a fast-paced production environment.

SmartView provides the following information at the table:

- Truss layout
- Plate slots
- Plate placement
- Dimensions
- Plate type
- Board information



SmartView also contains these convenient features:

Truss Timer

Shows the time passing since the last truss was completed, encouraging crews to beat their previous build time.

Snap Dimensions

Provides custom dimensions on demand for build verification. Dimensions are created by snapping from one joint to another.

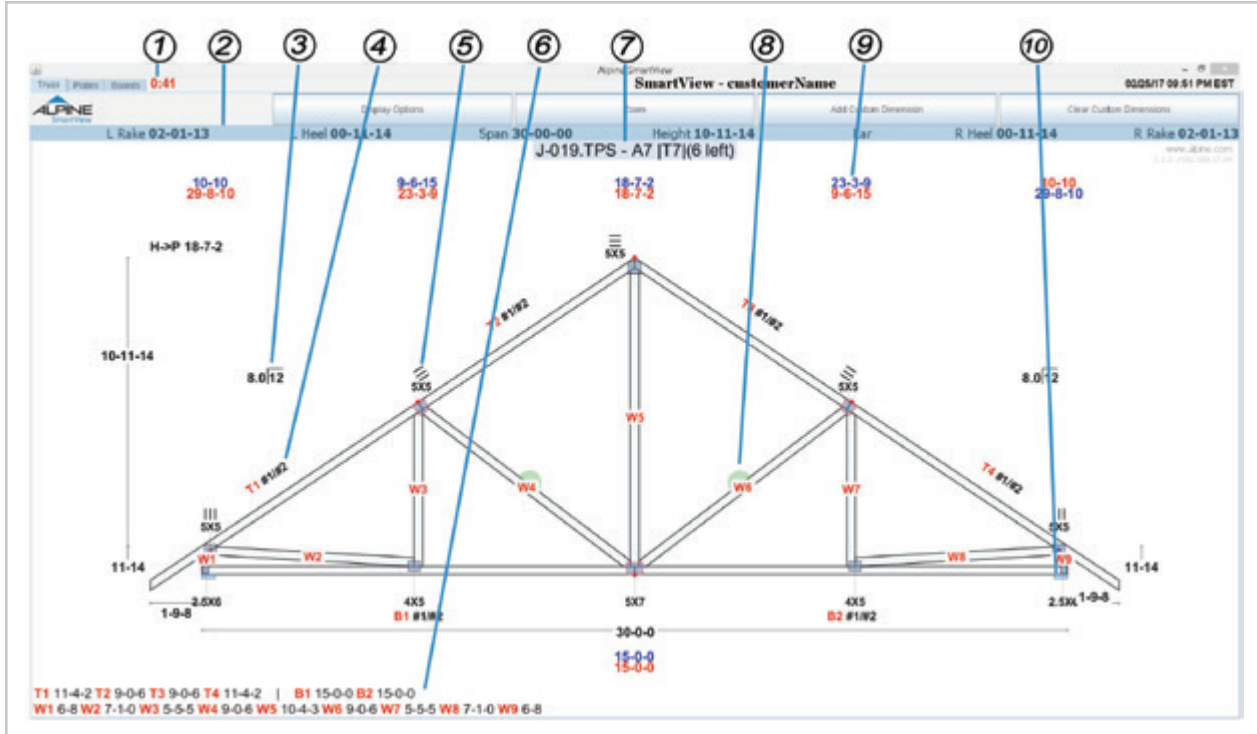
Zoom

Allows the customer to get a better view of any portion of truss by clicking on the screen. Click a second time to zoom in further and a third time to exit zoom.



SmartView Truss Assembly Viewer

Speeds up assembly at the truss production table!



Truss Mode Default Screen

1. **Truss Timer:** Displays the amount of time it takes to build a truss
2. **Dimension Bar:** All critical dimensions for building a truss
3. **Truss Pitch:** The pitch of the truss
4. **Board Labels:** The name of the board, the grade of the board, and non-standard widths
5. **Plate Labels:** Marks plate size, and special strength, if applicable. Has orientation marks for square plates. Red borders are shown on all plates that aren't centered on the joint.
6. **Board Overall Lengths:** A quick reference of the lumber's overall length

7. **Title Bar:** Shows the batch filename, truss name, truss tag, and the quantity of trusses remaining in the build
8. **Web Bracing:** Shown as a green circle
9. **Truss Dimensions:** Diagonal dimensions that are measured from both heels of the truss to the joint location indicated by a colored dot
10. **Bearing:** Bearing points are marked with a blue block

Ordering information

- One SmartView system can be daisy chained so that multiple TVs show the SAME truss.
- Additional SmartView systems are needed in order to view multiple trusses being built on the same table at the same time.
- The system includes software and a computer. TVs must be purchased separately and are not included with SmartView.
- Order Alpine part number: 36902



155 Harlem Avenue
North Building – 4th Floor
Glenview, Illinois 60025
800-521-9790
alpineitw.com

Call your Alpine
sales representative
and order yours today