



SpeedSet Table Retrofit System

The smart choice to increase truss assembly table productivity

- Revive your tables
- Speed up production
- Increase accuracy
- Raise profits

The SpeedSet table retrofit system will upgrade your old Alpine plastic tables to a modern automated system. The SpeedSet utilizes all new software with our latest productivity enhancing features. When you purchase the SpeedSet, your table will be completely updated. You won't believe it's not a new table!



Alpine SpeedSet Table Retrofit System

The standard Alpine SpeedSet system includes:

- **Units of two puck rails with four table density options**
- **Computer station with software**
- **New plastic table tops**

The pucks are sold in pairs of two. One will be typically located at the bottom of the table, while its counterpart will locate at the top. When a new truss is selected the pucks automatically move to the correct location to build the profile. If the operator would like to move a puck location, adjustment is quick and easy.

- **Plastic wear piece reduces puck wear**
- **Reliable chain driven system**
- **Self-cleaning channels**
- **Minimal maintenance requirements**



New Table Tops

Puck pairs



There are several options available to enhance the Alpine SpeedSet

- **Power liftouts**
- **Bridges to fill in walkways**
- **SmartView system**

The SmartView system allows truss builders to view the truss on a screen or TV. The package provides the builder with all of the information that is typically found on a print in a large easy to view format. The builder can see plate information and location, lumber size and truss dimensions.

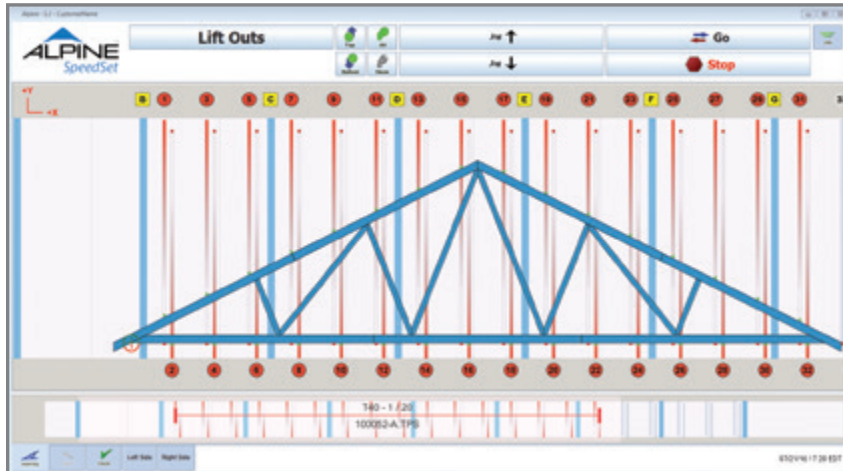
The package also includes the ability to zoom in on a location. It has the capability to snap from one feature to another and providing custom dimensions.

These features save time and movement, further increasing productivity.

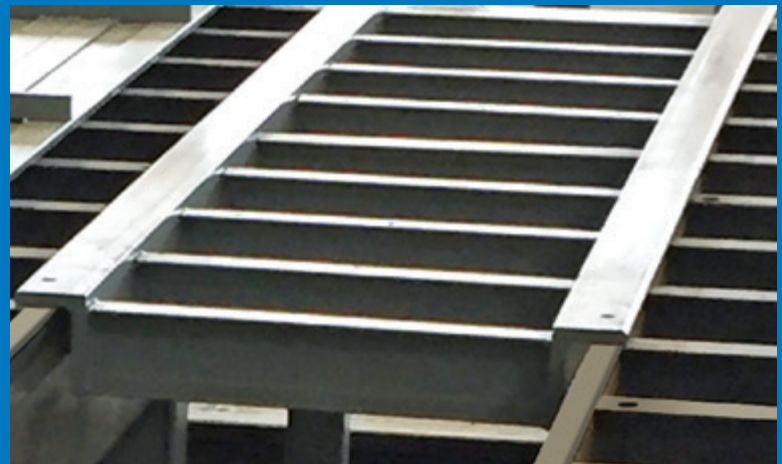
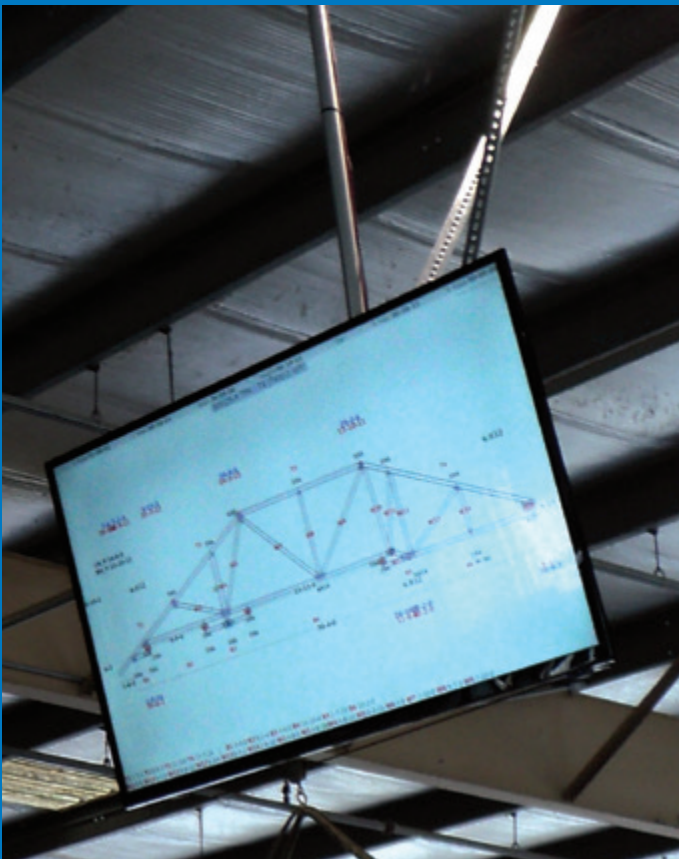
Quick to learn, simple to use software

Innovative Software Features

Our software is quick to learn and simple to use. The enriched graphics are easy to view in plant conditions and adjustments are simple.



- Intuitive buttons for most functions
- Snap locations move the truss on the table
- Snap will move pucks to more convenient locations
- Maintenance screen for diagnostics
- "Active Support" button connects to Tech Support

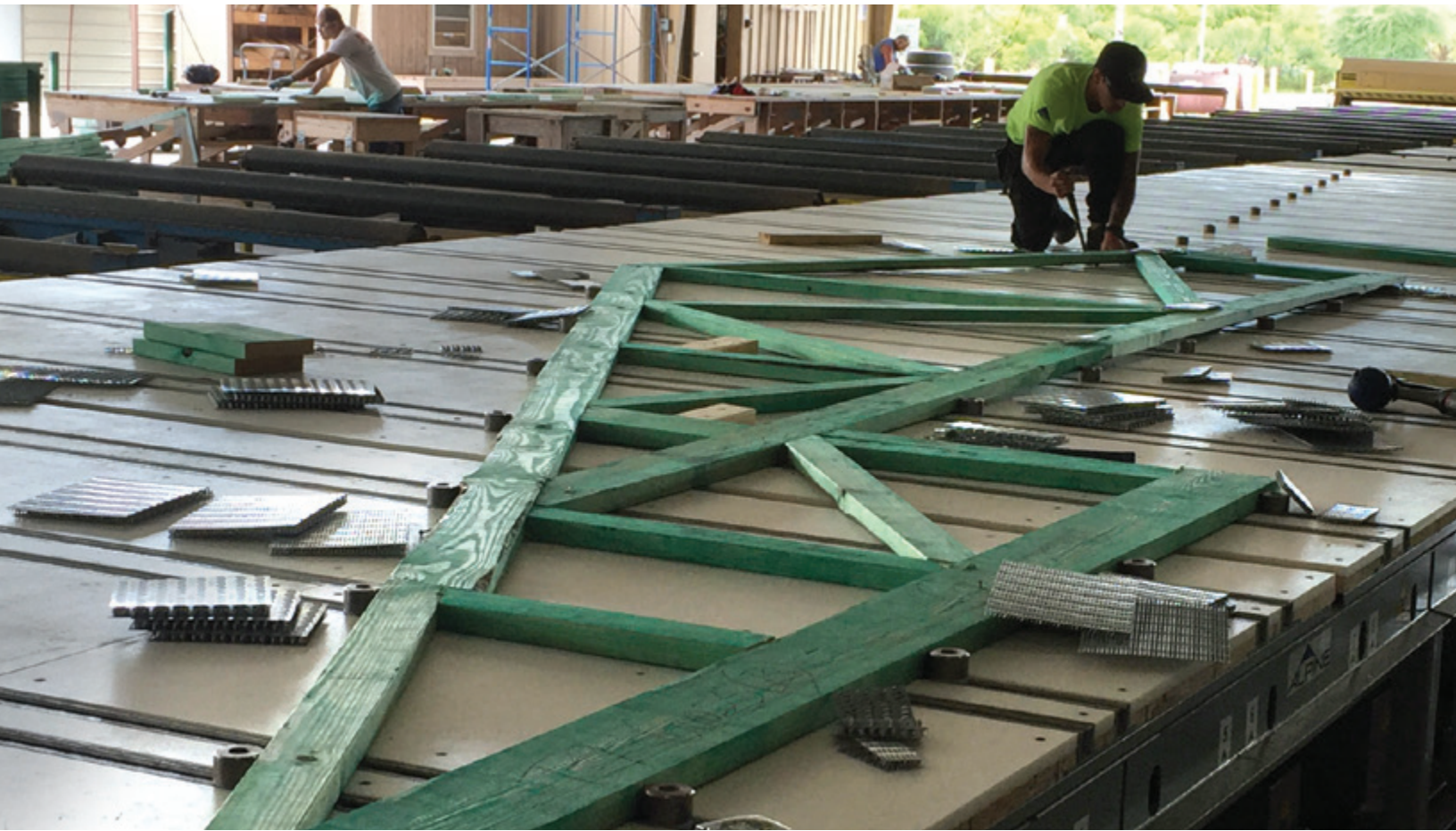


Optional
SmartView System

Optional
Walkway Bridge

Alpine SpeedSet Table Retrofit System

Increase table productivity and
triple your table output!



Technical Specifications

Axis Travel Length	13-00-04' (every other puck is offset)
Puck Spacing	44" OC, 29.33" OC, or ~17" OC
Puck Speed	<60 sec for full length move
Input Voltage	208-240VAC 3Ø 60HZ (specified by user)

Input Current	Varies per system
Air Requirement	Utilizes existing lift out air supply
Operating Temperature	32°F to 104°F

Installation

Complete installation services provided by an Alpine recommended service provider.

Warranty

One year limited warranty



155 Harlem Avenue
North Building – 4th Floor
Glenview, Illinois 60025
800-521-9790
alpineitw.com

**Call your Alpine
sales representative
and order yours today**