



# Alpine Truss Assembly Equipment

*Assembly that is*

**RELIABLE • EFFICIENT • PROFITABLE**

- Tables
- Automated Jigging
- Gantries
- Finish Rollers

Alpine has everything you need for fast, reliable truss assembly. With a wide range of products, we can provide everything from the basic requirements to the most sophisticated equipment available today. When you are looking for truss assembly equipment, look to Alpine, the leader in equipment innovation.



- Highly Efficient
- Labor Saving
- Trackless Movement

## Alpine RAM EasyRider<sup>TM</sup> Gantry

The most versatile truss fabrication system available

The **Alpine RAM EasyRider** gantry moves smoothly and quietly up and down the table. It is mounted on rails attached to the sides of the table, eliminating the safety hazards and inconveniences associated with floor tacking systems.

The operator rides on the gantry and never leaves the table during production. Positioning the operator on the gantry provides visibility of the table from a safe location.

When the gantry is not in operation, this same operator remains on top of the table, assembling the upper pieces of the truss. The other assemblers stay on the floor, building the lower portion of the truss.

Distribution of the workload with the **Alpine RAM EasyRider** gantry system is smooth, efficient and productive.



*Exceptional visibility is available from the operator platform.*



*A joystick controls both gantry travel and liftouts.*

### Gantry:

Travels at 140 feet per minute.

Roller is 24 inches in diameter.

### Control:

Gantry is controlled by a joystick for both travel and liftout actuation.

Panel switches can control 16 liftouts.

### Tables:

Each table work surface is 7 ft.-1 in. wide by 14 ft.-3 in. from top to bottom.

**Jigging:** Steel top.

### Electrical:

208 V 25 A 3Ø with transformer

230 V 22 A 3Ø

460 V 11 A 3Ø

or 115 V 15 A 1Ø



*Without walkways, the entire working surface can be used for jigging and pressing. The gantry operator steps from the platform directly onto the table to position the upper truss pieces and connectors.*



- Computer-Controlled
- Dimensionally Accurate
- Time Saving

## Alpine AutoSet Plus™

Automated jiggling for setups in less than 25 seconds

The **Alpine AutoSet Plus** computer-controlled jiggling system is an option that works with the **Alpine RAM EasyRider**, **Alpine SmartView** and the **Alpine RollerPress** to form a complete, highly automated truss-manufacturing system.

### Here's how it works:

Truss designs are downloaded to the system. When a specific truss is selected, jig stops automatically move into position on the assembly table, accurately forming the perimeter of the truss. The assembly crew places the chords and webs into position so the gantry can embed the plates.

When a truss run is complete, The **Alpine AutoSet Plus** sets up for the next truss in less than 25 seconds.

Automated pucks lead to higher accuracy and reduced employee fatigue, allowing production workers to keep a consistent pace throughout their shift. Fast, consistent assembly translates to lower labor costs and quicker turnarounds.

### Table configurations:

4 automated pucks, 6 manual pucks

8 automated pucks, 4 manual baseline pucks

**Table Top:** Laser cut steel

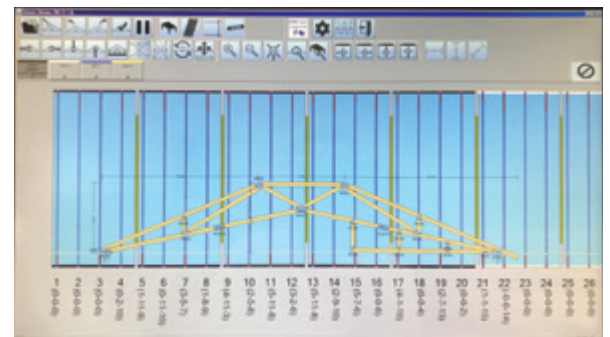
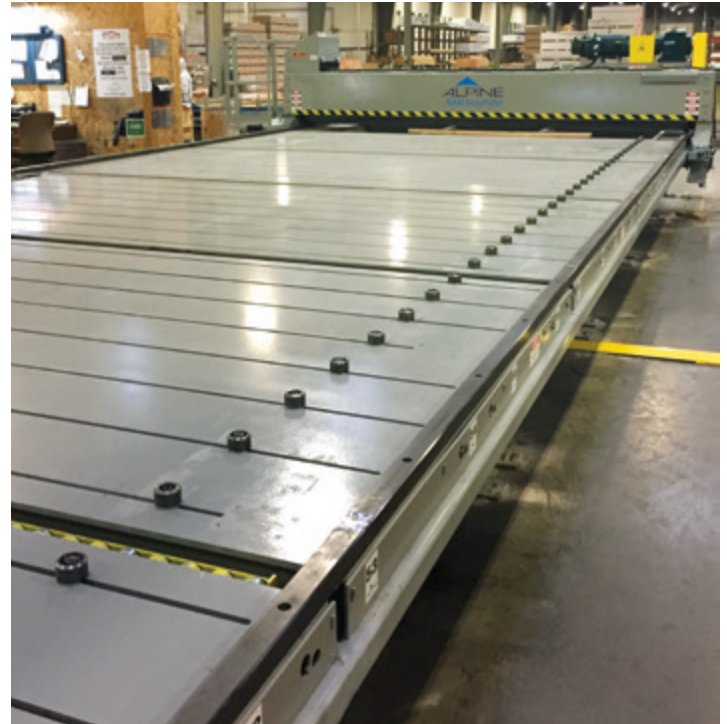
**Languages:** English, Spanish, French

**Voltage:** 480V

**Table width:** 14 ft.-3 in.

**Maximum span between automated pucks:** 12 ft.-6 in.

**Air requirement:** 2 CFM @ 100 psi per liftout



The **Alpine AutoSet Plus** is simple to operate using on-screen directional prompts and graphics that highlight each step.

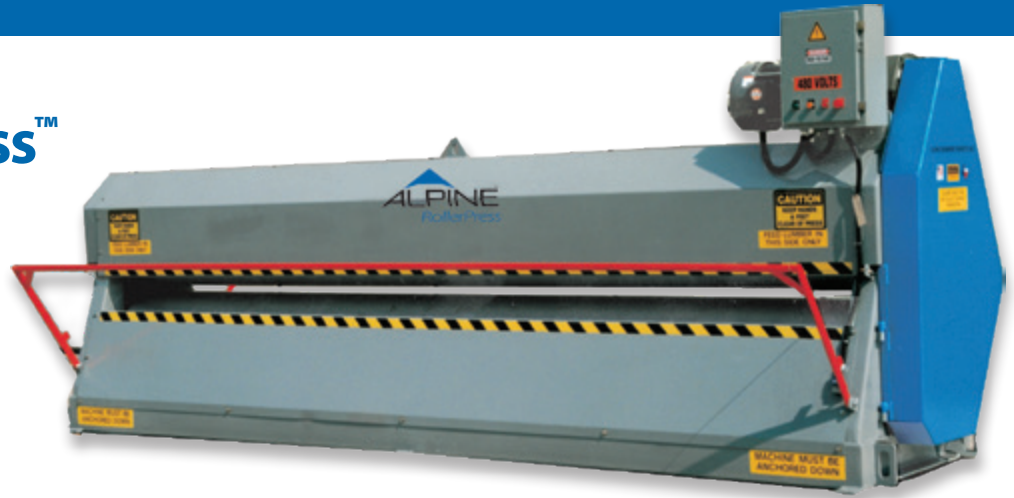




- Easy Operation
- Sturdy Design
- Minimal Maintenance

## Alpine RollerPress™

Heavy duty 24" roller press



With today's computer-controlled setups, multiple jiggling systems, and back-to-back gantry systems, the roller press sees continuous operation.

This essential piece of equipment must be strong, dependable and reliable.

The quality of the engineering and the strength of the components ensure that the **Alpine RollerPress** consistently gets the job done.

### Roller construction:

A four-inch round steel shaft runs completely through the 24-inch diameter body of each roll. The wall of the roll is one inch thick, with nine half-inch baffles hard-welded to the shaft and roll. End baffle gussets are included for additional strength. Each roller's shaft ends are mounted with sealed, self-aligning roller bearings.

If you're looking for highly dependable roller press, the **Alpine RollerPress** is all you need. Its strong, robust features completely embed plates of all sizes in a single pass, ensuring quality trusses for your customers.



### Specifications:

|  |                  |
|--|------------------|
| <b>Capacity (roller length):</b>                 | 15 ft.-6 in.     |
| <b>Overall length:</b>                           | 17 ft.-6 in.     |
| <b>Overall width:</b>                            | 6 ft.-0 in.      |
| <b>Overall height:</b>                           | 6 ft.-10 in.     |
| <b>Floor height<br/>(to top of bottom roll):</b> | 2 ft.-6-3/16 in. |
| <b>Weight:</b>                                   | 13,100 lbs.      |



155 Harlem Avenue  
North Building – 4th Floor  
Glenview, Illinois 60025

800-521-9790  
alpineitw.com

Call Alpine Equipment at  
**800-521-9790**  
to order today