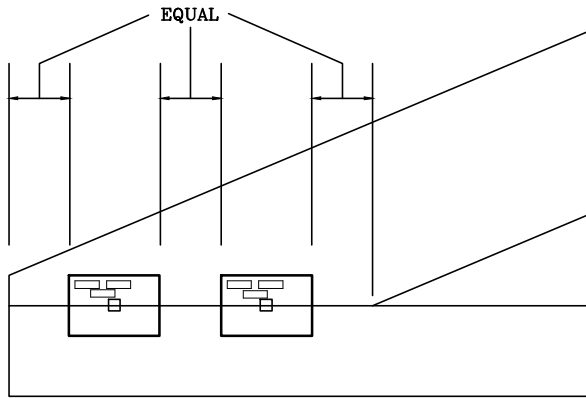


# HEEL JOINT PLATE LOCATION DETAILS

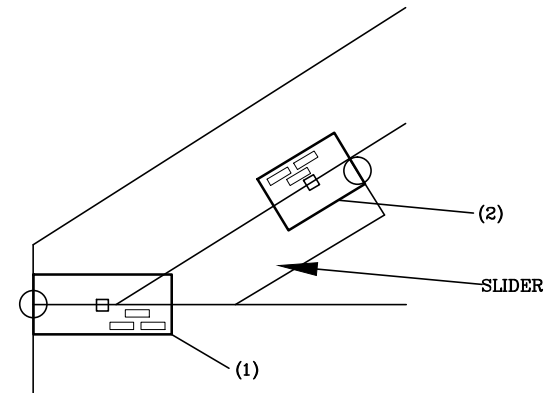
D5

PLATES CENTERED HORIZONTALLY AND VERTICALLY ON SCARF.



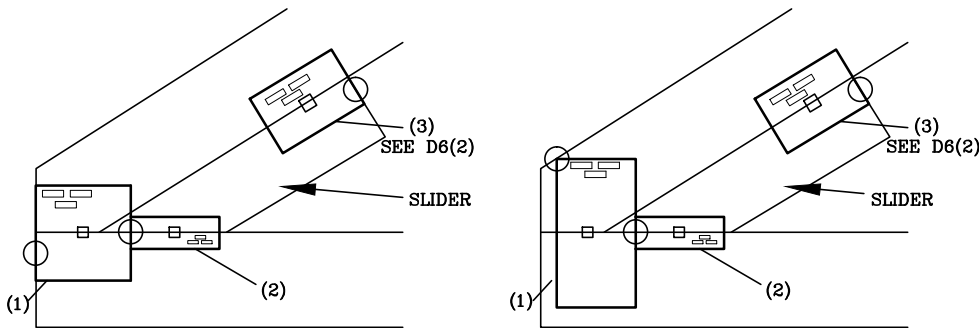
D6

- (1) PLATE CENTERED VERTICALLY ON TOP EDGE OF BOTTOM CHORD AND HELD FLUSH WITH END OF BOTTOM CHORD.
- (2) PLATE PARALLEL TO TOP CHORD, CENTERED "VERTICALLY", WITH END OF PLATE FLUSH WITH END OF PARTIAL BLOCK.



D7

- (1) PLATE CENTERED VERTICALLY ON TOP EDGE OF BOTTOM CHORD WITH PLATE HELD FLUSH WITH END OF BOTTOM CHORD, OR WITH PLATE CORNER HELD AT TOP OF TOP CHORD TO ACHIEVE VERTICAL CENTERING (SHOWN DASHED).
- (2) PLATE CENTERED VERTICALLY ON TOP EDGE OF BOTTOM CHORD AND HELD FLUSH WITH END OF FIRST PLATE.



D8R

PLATE IS ROTATED SUCH THAT OPPOSITE CORNERS OF PLATE ARE ON TOP EDGE OF BOTTOM CHORD.

PLATE CENTERED ON SCARF

PLATE MAY EXTEND PAST SCARF

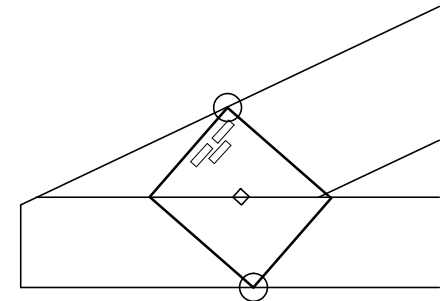
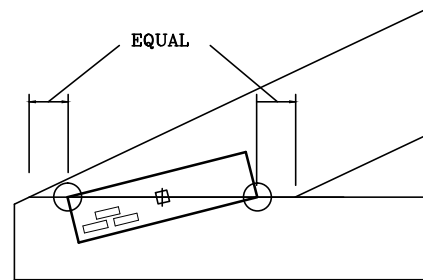


PLATE HELD AGAINST END OF TOP CHORD (○), OR SHIFTED INWARDS UNTIL CORNERS (○) ARE IN CONTACT WITH OUTER EDGES OF THE TOP AND BOTTOM CHORDS.



13389 Lakefront Drive  
Earth City, MO 63045

- NOTES:  
WEDGE/SLIDER MAY BE REQUIRED AS SPECIFIED ON SEALED DESIGN.
- LOCATES PLATE CORNER OR FLUSH EDGE.
  - LOCATES PLATE CENTER.
  - + LOCATES CENTER OF SCARF.

GIRDER HEEL

160  
D

D5 THROUGH D8R

DATE 10/01/14