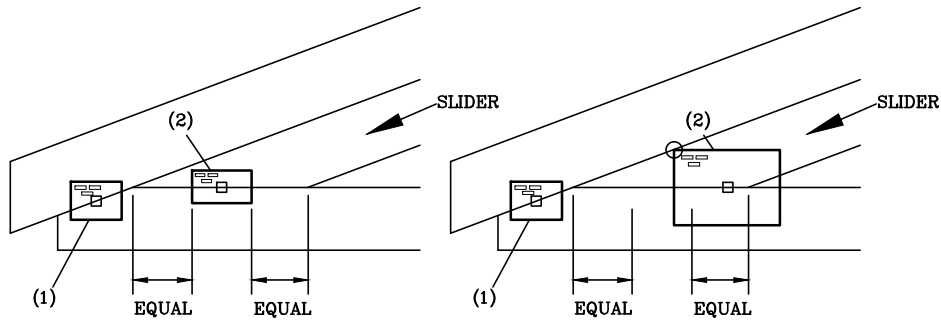


# HEEL JOINT PLATE LOCATION DETAILS

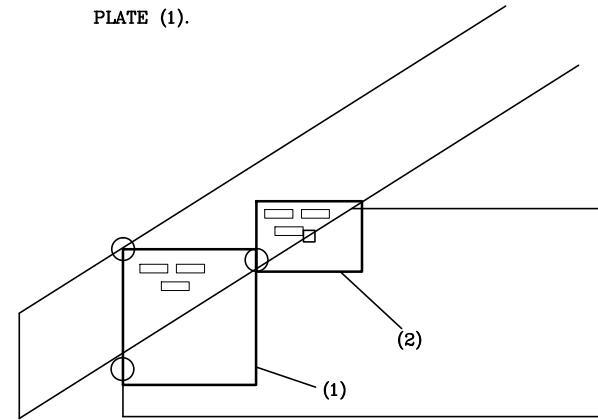
C6

- (1) SEE APPLICABLE DETAIL. (A1 SHOWN)
- (2) PLATE CENTERED VERTICALLY ON TOP EDGE OF BOTTOM CHORD AND EQUALLY SPACED AS SHOWN OR HELD AT BOTTOM EDGE OF TOP CHORD EDGE OF TOP CHORD.



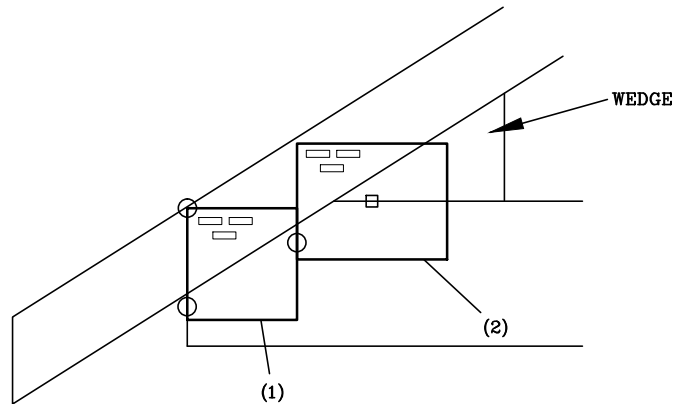
C7

- (1) PLATE CORNER HELD AT TOP OF TOP CHORD AND FLUSH WITH END OF BOTTOM CHORD.
- (2) PLATE CENTERED VERTICALLY ON SCARF AND HELD FLUSH WITH PLATE (1).



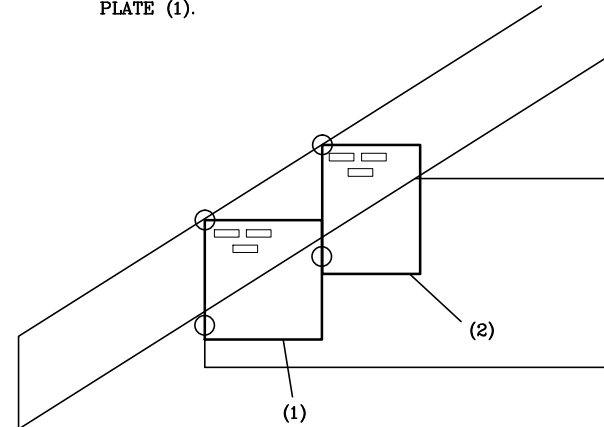
C8

- (1) PLATE CORNER HELD AT TOP OF TOP CHORD AND FLUSH WITH END OF BOTTOM CHORD.
- (2) PLATE CENTERED VERTICALLY AT TOP EDGE OF BOTTOM CHORD AND HELD FLUSH WITH PLATE (1).



C9

- (1) PLATE CORNER HELD AT TOP OF TOP CHORD AND FLUSH WITH END OF BOTTOM CHORD.
- (2) PLATE CORNER HELD AT TOP OF TOP CHORD AND HELD FLUSH WITH PLATE (1).



13389 Lakefront Drive  
Earth City, MO 63045

NOTES:  
WEDGE/SLIDER MAY BE REQUIRED AS SPECIFIED ON SEALED DESIGN.  
○ LOCATES PLATE CORNER OR FLUSH EDGE.  
□ LOCATES PLATE CENTER.

NON-STANDARD HEEL

160  
C

C6 THROUGH C9

DATE 10/01/14