

GENERAL INFORMATION ON PLATE ORIENTATION

FOR ALL CONNECTOR TYPES THE PLATE SIZE IS INDICATED BY WIDTH AND LENGTH. (FIG 1)

(R) AFTER THE PLATE SIZE INDICATES THAT THE PLATE IS ROTATED 90 DEGREES TO THE TYPICAL LOCATION SHOWN ON DWG 160 A-Z. (FIG 2)

≡ WITH THE PLATE SIZE INDICATES THE ORIENTATION OF THE TOOTH SLOT WHEN PLACED ON THE JOINT. (FIG 2)

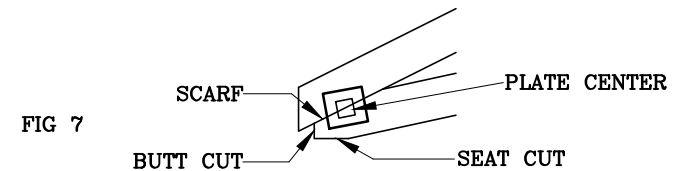
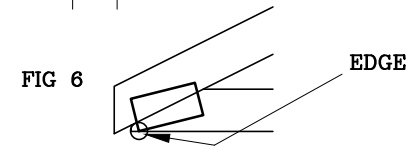
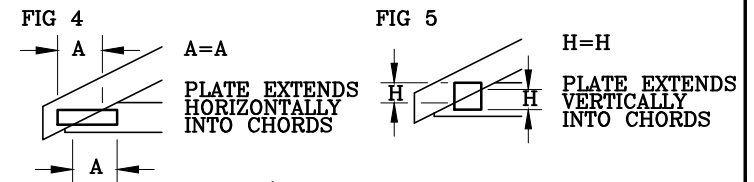
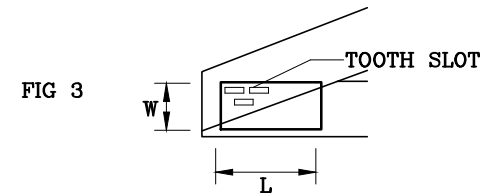
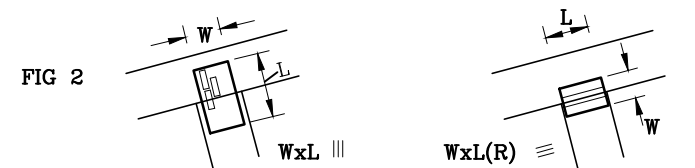
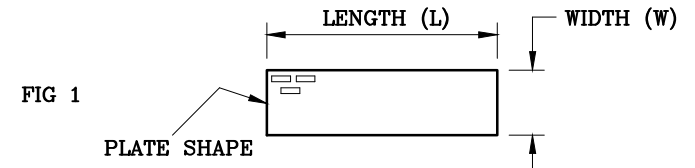
FOR CONNECTORS, TOOTH SLOTS ARE PARALLEL TO PLATE LENGTH. ON HEEL JOINTS, THE TOOTH SLOTS ARE PARALLEL TO THE BOTTOM CHORD UNLESS OTHERWISE NOTED ON THE HEEL TYPE DETAIL. (FIG 3)

HEEL PLATES ARE TO BE POSITIONED AS SHOWN ON THE HEEL TYPE DETAIL. PLATES THAT ARE LOCATED "EQUALLY SPACED" ARE CENTERED VERTICALLY AND HORIZONTALLY ON THE SCARF. (FIG 4, FIG 5)

A CIRCLE INDICATES THAT THE PLATE CORNER OR PLATE EDGE IS HELD FLUSH WITH THE EDGE OR POINT INDICATED. (FIG 6)

A SQUARE INDICATES THE PLATE CENTER. (FIG 7)

REFER TO INDIVIDUAL PLATE PLOTS OF JOINTS FOR ALL PLATE POSITIONS NOT DESCRIBED ON DWG 160 A-Z.



- NOTES:
- 1) THIS DETAIL IS TO BE USED WITH DETAIL DRAWINGS 160 A-Z.
 - 2) LINES DRAWN ON THE PLATE OR HATCH MARKS NEXT TO THE PLATE SIZE DESCRIPTION INDICATE THE DIRECTION OF SLOTS.



13389 Lakefront Drive
Earth City, MO 63045

GENERAL INFORMATION

160

PAGE 1 OF 1

DATE 10/01/14