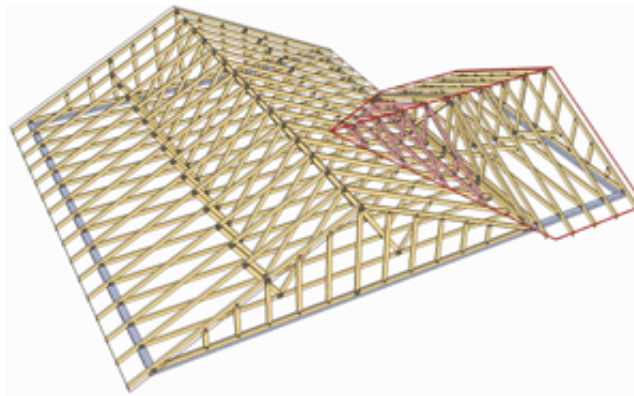


## Why Specify Our Wood Truss Component Systems?

### Why Specify Our Wood Component Systems?

- Economy. Labor savings due to light weight, ease of installation with job site labor, no field cutting or trimming, open webs, fast close-in, result in overall lower in-place cost.
- Architectural Versatility. Virtually unlimited aesthetic and functional design capability.
- Clear Spans. Allows complete interior partitioning and room arrangement flexibility. Clear spans to 80' are common.
- Proven Performance. Over 150 million Alpine trusses have been installed in all kinds of structures throughout the country. Properly fabricated and erected, they are trouble free performers.
- Local Availability. Manufactured in more than 550 plants across the continent, eliminating long shipments or lead times.
- Consistent Quality. Shop fabricated on precision machinery in accordance with established standards.
- Insulation. Timber has excellent insulation capabilities, and there are no temperature bridges through the component.
- Environmentally Compatible. Wood is the most energy efficient of major building products, and the only one from a renewable resource.



Testing is integral to Alpine's design philosophy. It is your assurance that you are specifying only the highest-quality, cost efficient structural products for your clients. Each year our R&D Laboratory's on-going research program includes tests of hundreds of metal plate-connected joints and full-size trusses.